

# PASSION TWO FINE BRANDS

myrtle  
beach

JAMES &  
NICHOLSON

Item	Name	Page	Item	Name	Page
8001	Ladies'-T	33	JN056	Elastic-T Long-Sleeved	79
8002	Men's-T	33	JN057	Basic Sweat	144
8003	Ladies'-T Pocket	34	JN058	Sweat Jacket	144
8004	Men's-T Pocket	34	JN059	Hooded Jacket	145
8005	Ladies' Casual-T	35	JN059K	Hooded Jacket Junior	145
8007	Ladies' Basic-T	29	JN070	Classic Polo	97
8007G	Girls' Basic-T	31	JN070K	Classic Polo Junior	97
8008	Men's Basic-T	29	JN071	Classic Polo Ladies	97
8008B	Boys' Basic-T	31	JN135	Men's Softshell Jacket	249
8009	Ladies' Basic Polo	44	JN135K	Softshell Jacket Junior	249
8010	Men's Basic Polo	44	JN136	Men's Softshell Vest	248
8015	Ladies' Slub-T	37	JN137	Ladies' Softshell Jacket	249
8016	Men's Slub-T	37	JN138	Ladies' Softshell Vest	248
8017	Ladies' Slub-Top	36	JN180	Ladies' Elastic Polo Long-Sleeved	123
8021	Ladies' Sweat	49	JN183	Rollneck Shirt	156
8022	Men's Sweat	49	JN193	Men's Shirt Slim Fit Long	201
8023	Ladies' Hoody	50	JN199	Round Sweat Open Hem	142
8024	Men's Hoody	50	JN200	Safety Vest	412
8025	Ladies' Zip Hoody	51	JN200K	Safety Vest Junior	412
8026	Men's Zip Hoody	51	JN206	Function Sneaker Socks	348
8026K	Children's Zip Hoody	51	JN207	Function Sport Socks	348
8027	Ladies' T-Shirt Striped	42	JN208	Compression Socks	348
8028	Men's T-Shirt Striped	42	JN209	Sneaker Socks	349
8029	Ladies' Polo Striped	43	JN210	Sport Socks Short	349
8030	Men's Polo Striped	43	JN211	Sport Socks	349
8031	Bio Sneaker Socks	52	JN212	Worker Socks Cool	411
8032	Bio Socks	52	JN213	Worker Socks Warm	411
8033	Ladies' Lounge Hoody	NEW 25	JN214	Sport Sneaker Socks	347
8034	Men's Lounge Hoody	NEW 25	JN215	Sport Socks	347
8035	Ladies' Lounge Pants	NEW 26	JN302	Men's Running Short Tights	331
8036	Men's Lounge Pants	NEW 26	JN305	Men's Running Tank	323
8038	Men's Lounge Shorts	NEW 27	JN306	Men's Running-T	324
JN001	Round-T Medium (150g/m <sup>2</sup> )	67	JN312	Ladies' Running Short Tights	331
JN002	Round-T Heavy (180g/m <sup>2</sup> )	67	JN315	Ladies' Running Tank	323
JN003	V-T Medium	69	JN316	Ladies' Running-T	324
JN004	Ladies' V-T	78	JN322	Bike Short Tights	345
JN010	Men's Raglan-T	72	JN335	Bike Gloves Winter	346
JN019	Junior Basic-T	67	JN336	Bike Gloves Summer	346
JN020	Polo Piqué Medium	98	JN342	Team Socks	355
JN021	Polo Piqué Heavy	98	JN352	Round-Neck Zip	156
JN022	Polo Piqué Long-Sleeved	123	JN354	Ladies' Doubleface Jacket	149
JN023	Function-T	84	JN355	Men's Doubleface Jacket	149
JN024	Function Polo	115	JN356	Ladies' Elastic Piqué Polo	100
JN025	Worker Polo	394	JN357	Ladies' Active-T	88, 327
JN026	Polo Piqué Pocket	99	JN358	Men's Active-T	88, 327
JN029	Polo Piqué Long-Sleeved	123	JN358K	Active-T Junior	88, 327
JN034	Polo Tipping	102	JN372	Team Signal-T	355
JN035	Ladies' Jogging Pants	157	JN386	Team Shirt	353
JN036	Men's Jogging Pants	157	JN386K	Team Shirt Junior	353
JN036K	Junior Jogging Pants	157	JN387	Basic Team Shorts	352
JN040	Round Sweat Heavy	135	JN387K	Basic team Shorts Junior	352
JN040K	Round Sweat Heavy Junior	135	JN390	Ladies' Running-T	325
JN041	Polo Sweat Heavy	142	JN391	Men's Running-T	325
JN042	Men's Hooded Jacket	139	JN396	Ladies' Running-T	321
JN043	Half-Zip Fleece	160	JN397	Men's Running-T	321
JN044	Full-Zip Fleece	161	JN397K	Running-T Junior	321
JN044K	Full-Zip Fleece Junior	161	JN401	Men's Polo High Performance	113
JN045	Fleece Vest	160	JN411	Ladies' Polo High Performance	113
JN046	Men's Jacket	138	JN451	Ladies' Bike-T Half Zip	342
JN047	Hooded Sweat	137	JN452	Men's Bike-T Half Zip	342
JN047K	Hooded Sweat Junior	137	JN453	Ladies' Bike-T Full Zip	343
JN048	Girly Microfleece Vest	162	JN454	Men's Bike-T Full Zip	343
JN049	Girly Microfleece Jacket	162	JN460	Ladies' Bike Shorts	344
JN051	Ladies' Hooded Sweat	136	JN461	Men's Bike Shorts	344
JN052	Ladies' Jacket	138	JN462	Ladies' Bike Short Tights	345
JN053	Ladies' Hooded Jacket	139	JN463	Ladies' Bike 3/4 Tights	345
JN054	Tangy-T Long-Sleeved	78	JN479	Ladies' Running Tights	332
JN055	Elastic-T	79	JN480	Men's Running Tights	332

Item	Name	Page	Item	Name	Page
JN488	Men's Running Trunks	333	JN628	Ladies' Denim Blouse	207
JN491	Ladies' Winter Tights	335	JN629	Men's Denim Shirt	207
JN492	Men's Winter Tights	335	JN637	Ladies' Traditional Shirt	215
JN493	Ladies' Sports Tanktop	314	JN638	Men's Traditional Shirt	215
JN494	Men's Sports Tanktop	314	JN640	Men's Traditional Knitted Jacket	217
JN495	Ladies' Sports T-Shirt	315	JN641	Ladies' Business Shirt Longsleeve	213, 390
JN496	Men's Sports T-Shirt	315	JN642	Men's Business Shirt Longsleeve	213, 390
JN497	Ladies' Sports Shirt Longsleeve	316	JN643	Ladies' Business Shirt Shortsleeve	212, 391
JN498	Men's Sports Shirt Longsleeve	316	JN644	Men's Business Shirt Shortsleeve	212, 391
JN504	Mini-T	89	JN645	Ladies' Shirt Slim Fit	201
JN505	Colour Ring	621	JN647	Ladies' Shirt "Plain"	208
JN506	Colour Guide	621	JN648	Men's Shirt "Plain"	208
JN511	Ladies' Bike-T	341	JN656	Ladies' V-Neck Pullunder	220
JN512	Men's Bike-T	341	JN657	Men's V-Neck Pullunder	220
JN513	Ladies' Bike-T Half Zip	338	JN658	Ladies' V-Neck Pullover	219
JN514	Men's Bike-T Half Zip	338	JN659	Men's V-Neck Pullover	219
JN515	Ladies' Bike-T Full Zip	339	JN660	Ladies' V-Neck Cardigan	221
JN516	Men's Bike-T Full Zip	339	JN661	Men's V-Neck Cardigan	221
JN519	Ladies' Sports-T	303	JN663	Ladies' Pullover	223
JN520	Men's Sports-T	303	JN664	Men's Pullover	223
JN521	Ladies' Sports Shirt Long-Sleeved	302	JN667	Ladies' Cardigan	222
JN522	Men's Sports Shirt Long-Sleeved	302	JN668	Men's Cardigan	222
JN523	Ladies' Sports Shirt	305	JN669	Ladies' Shirt "Diamonds"	205
JN524	Men's Sports Shirt	305	JN670	Men's Shirt "Diamonds"	205
JN525	Ladies' Sports Shorts	304	JN671	Ladies' Shirt "Wings"	206
JN526	Men's Sports Shorts	304	JN672	Men's Shirt "Wings"	206
JN527	Ladies' Sports Tights	307	JN673	Ladies' Shirt "Dots"	204
JN528	Men's Sports Tights	307	JN674	Men's Shirt "Dots"	204
JN529	Ladies' Sports 3/4 Tights	306	JN675	Ladies' Traditional Shirt Plain	216
JN531	Ladies' Sports Zip Hoody	311	JN676	Men's Traditional Shirt Plain	216
JN532	Men's Sports Zip Hoody	311	JN677	Ladies' Shirt Longsleeve Poplin	211
JN533	Ladies' Sports Jacket	309	JN678	Men's Shirt Longsleeve Poplin	211
JN534	Men's Sports Jacket	309	JN679	Ladies' Shirt Shortsleeve Poplin	210
JN568	Ladies' Elastic Polo	108	JN680	Men's Shirt Shortsleeve Poplin	210
JN569	Men's Elastic Polo	108	JN681	Ladies' Shirt Longsleeve Micro-Twill	193
JN570	Ladies' Hooded Fleece	180	JN682	Men's Shirt Longsleeve Micro-Twill	193
JN571	Men's Hooded Fleece	180	JN683	Ladies' Shirt Shortsleeve Micro-Twill	194
JN574	Ladies' Active Polo	111	JN684	Men's Shirt Shortsleeve Micro-Twill	194
JN575	Ladies' Active Polo Sleeveless	111	JN685	Ladies' Shirt Longsleeve Oxford	196
JN576	Men's Active Polo	111	JN686	Men's Shirt Longsleeve Oxford	196
JN582	Ladies' Zip-Off Pants	185	JN687	Ladies' Shirt Shortsleeve Oxford	195
JN583	Men's Zip-Off Pants	185	JN688	Men's Shirt Shortsleeve Oxford	195
JN584	Ladies' Outdoor Pants	187	JN689	Ladies' Shirt Longsleeve Herringbone	192
JN585	Men's Outdoor Pants	187	JN690	Men's Shirt Longsleeve Herringbone	192
JN588	Ladies' Knitted Fleece Hoody	179	JN701	Ladies' Polo	112
JN589	Men's Knitted Fleece Hoody	179	JN702	Men's Polo	112
JN590	Ladies' Knitted Fleece Jacket	176	JN703	Ladies' Polo	120
JN591	Men's Knitted Fleece Jacket	176	JN704	Men's Polo	120
JN594	Ladies' Hooded Jacket	143	JN705	Ladies' Heather Polo	122
JN595	Men's Hooded Jacket	143	JN706	Men's Heather Polo	122
JN596	Ladies' Structure Fleece Jacket	181	JN707	Ladies' Pima Polo	101
JN597	Men's Structure Fleece Jacket	181	JN708	Men's Pima Polo	101
JN606	Men's Business Shirt Long-Sleeved	203	JN709	Ladies' Elastic Polo Piqué	103
JN607	Men's Business Shirt Short-Sleeved	202	JN710	Men's Elastic Polo Piqué	103
JN608	Ladies' Business Blouse Long-Sleeved	203	JN711	Ladies' Polo	117
JN609	Ladies' Business Blouse Short-Sleeved	202	JN712	Men's Polo	117
JN615	Ladies' Long-Sleeved Blouse	203	JN713	Ladies' Polo Long-Sleeved	125
JN616	Ladies' Checked Blouse	214	JN714	Men's Polo Longs-Sleeved	125
JN617	Men's Checked Shirt	214	JN715	Ladies' Traditional Polo	119
JN618	Ladies' Plain Shirt	209	JN716	Men's Traditional Polo	119
JN619	Men's Plain Shirt	209	JN719	Ladies' Active Polo	110
JN620	Men's Shirt "HAI"	198	JN720	Men's Active Polo	110
JN621	Men's Shirt "BUTTON DOWN"	198	JN725	Ladies' Polo Single Stripe	105
JN622	Men's Shirt "NEW KENT"	199	JN726	Men's Polo Single Stripe	105
JN623	Men's Shirt "KENT"	199	JN727	Ladies' Polo Stripe	104
JN624	Men's Shirt "KENT", for Cufflinks	200	JN728	Men's Polo Stripe	104
JN625	Men's Shirt "BUTTON DOWN"	200	JN735	Ladies' Active-V	87, 326
JN626	Ladies' Blouse	197	JN736	Men's Active-V	87, 326



Item	Name		Page	Item	Name		Page
JN737	Ladies' Active Tanktop	NEW	329	JN825	Craftsmen Softshell Vest - STRONG -		458
JN738	Men's Active Tanktop	NEW	329	JN827	Craftsmen T-Shirt - STRONG -		470
JN739	Ladies' Knitted Hybrid Vest		170, 258	JN828	Craftsmen Poloshirt - STRONG -		471
JN740	Men's Knitted Hybrid Vest		170, 258	JN829	Ladies' Workwear Polo		385
JN741	Ladies' Knitted Hybrid Jacket		171, 259	JN830	Men's Workwear Polo		385
JN742	Men's Knitted Hybrid Jacket		171, 259	JN831	Workwear Half Zip Sweat		389
JN744	Promo-T Girl 150		64	JN832	Workwear Pants - STRONG -		474
JN745	Promo-T Boy 150		64	JN833	Workwear Pants with Bib - STRONG -		472
JN746	Promo-T Lady 150		63	JN835	Workwear Bermudas - STRONG -		477
JN749	Ladies' Slub T-Shirt		85	JN836	Workwear Sweat Jacket		389
JN750	Men's Slub T-Shirt		85	JN837	Ladies' Workwear T-Shirt		384
JN751	Ladies' Slub Polo		109	JN838	Men's Workwear T-Shirt		384
JN752	Men's Slub Polo		109	JN839	BIO Workwear-Half Zip Hoody		141, 376
JN753	Ladies' Polo Bicolor		107	JN840	Workwear Sweatshirt		388
JN754	Men's Polo Bicolor		107	JN841	Ladies' Workwear Fleece Jacket - STRONG -		465
JN755	Promo Zip Hoody Lady		133	JN842	Men's Workwear Fleece Jacket - STRONG -		465
JN756	Promo Zip Hoody Men		133	JN844	Workwear Softshell Jacket - STRONG -		461
JN761	Ladies' Knitted Fleece Jacket		175	JN845	Workwear Softshell Vest - STRONG -		460
JN762	Men's Knitted Fleece Jacket		175	JN846	Men's Workwear Polo Pocket		387
JN763	Ladies' Stretchfleece Jacket		177	JN847	Workwear Pants - COLOR -		453
JN764	Men's Stretchfleece Jacket		177	JN848	Workwear Pants with Bib - COLOR -		455
JN765	Ladies' Basic Fleece Jacket		163	JN849	Workwear Jacket - COLOR -		447
JN766	Men's Basic Fleece Jacket		163	JN850	Workwear Vest - COLOR -		446
JN767	Ladies' Knitted Hybrid Vest		172, 260	JN851	Workwear Softshell Jacket - COLOR -		445
JN768	Men's Knitted Hybrid Vest		172, 260	JN852	Workwear Softshell Vest - COLOR -		444
JN769	Ladies' Fleece Jacket		159	JN853	Workwear Softshell Padded Jacket - COLOR -		443
JN770	Men's Fleece Jacket		159	JN854	Workwear Softshell Padded Vest - COLOR -		442
JN771	Ladies' Knitted Hybrid Jacket		173, 261	JN855	Ladies' Workwear Fleece Vest - STRONG -		464
JN772	Men's Knitted Hybrid Jacket		173, 261	JN856	Men's Workwear Fleece Vest - STRONG -		464
JN773	Ladies' Knitted Fleece Vest		174	JN857	Ladies' Workwear Polo - COLOR -		451
JN774	Men's Knitted Fleece Vest		174	JN858	Men's Workwear Polo - COLOR -		451
JN775	Ladies' Club Sweat Jacket		147	JN859	Ladies' Workwear T-Shirt - COLOR -		450
JN776	Men's Club Sweat Jacket		147	JN860	Men's Workwear T-Shirt - COLOR -		450
JN777	Ladies' Club Hoody		151	JN861	Ladies' Knitted Workwear Fleece Jacket - STRONG -		467
JN778	Men's Club Hoody		151	JN862	Men's Knitted Workwear Fleece Jacket - STRONG -		467
JN779	Ladies' Jog-Pants		150	JN864	Men's Knitted Workwear Fleece Half-Zip - STRONG -		466
JN780	Men's Jog-Pants		150	JN865	Ladies' Workwear Polo Pocket Longsleeve		386
JN781	Ladies' Fleece Jacket		158	JN866	Men's Workwear Polo Pocket Longsleeve		386
JN782	Men's Fleece Jacket		158	JN867	Ladies' Workwear Polo Pocket		387
JN783	Ladies' Structure Fleece Jacket		165	JN868	Workwear Half-Zip Sweat - COLOR -		448
JN784	Men's Structure Fleece Jacket		165	JN869	Ladies' Workwear Sweat Jacket - COLOR -		449
JN785	Ladies' Stretchfleece Jacket		166	JN870	Men's Workwear Sweat Jacket - COLOR -		449
JN786	Men's Stretchfleece Jacket		166	JN871	Workwear Stretch-Bermuda-Jeans	NEW	364
JN787	Ladies' Sports Shirt Halfzip		167	JN872	Workwear Bermudas - COLOR -		454
JN788	Men's Sports Shirt Halfzip		167	JN873	Ladies' BIO Workwear Polo		45, 382
JN789	Promo-T Lady 180		65	JN874	Men's BIO Workwear Polo		45, 382
JN790	Promo-T Man 180		65	JN875	Workwear Stretch-Jeans		365
JN791	Promo Polo Lady		95	JN877	Workwear Cargo Pants		367
JN792	Promo Polo Man		95	JN878	Workwear Pants - SOLID -		435
JN793	Promo Sweat Lady		131	JN879	Workwear Pants with Bib - SOLID -		437
JN794	Promo Sweat Men		131	JN880	Workwear Bermudas - SOLID -		434
JN795	Promo Hoody Lady		132	JN881	Workwear Softshell Light Vest - SOLID -		426
JN796	Promo Hoody Man		132	JN882	Workwear Softshell Light Jacket - SOLID -		427
JN796K	Promo Hoody Children		132	JN883	Workwear Softshell Vest - SOLID -		424
JN797	Promo-T Man 150		63	JN884	Workwear Softshell Jacket - SOLID -		425
JN800	Workwear-T Men		392	JN885	Workwear Softshell Padded Vest - SOLID -		422
JN801	Workwear Polo Men		393	JN886	Workwear Softshell Padded Jacket - SOLID -		423
JN802	Workwear-T Women		392	JN887	Work Overall - SOLID -		438
JN803	Workwear Polo Women		393	JN888	Work Coat - SOLID -		439
JN810	Workwear Jacket		397	JN889	Ladies' Workwear T-Shirt - SOLID -		432
JN812	Pilot Jacket 3 in 1		398	JN890	Men's Workwear T-Shirt - SOLID -		432
JN813	Workwear Vest		399	JN891	Ladies' Workwear Polo - SOLID -		433
JN814	Workwear Pants		399	JN892	Men's Workwear Polo - SOLID -		433
JN815	Safety Vest Adults		413	JN893	Ladies' Workwear Sweat-Jacket - SOLID -		429
JN815K	Safety Vest Kids		413	JN894	Men's Workwear Sweat-Jacket - SOLID -		429
JN821	Workwear Jacket - STRONG -		463	JN895	Workwear Half-Zip Sweat - SOLID -		428
JN822	Workwear Vest - STRONG -		462	JN897	Ladies' Knitted Workwear Fleece Jacket - SOLID -		431
JN824	Craftsmen Softshell Jacket - STRONG -		459	JN898	Men's Knitted Workwear Fleece Jacket - SOLID -		431



Item	Name	Page
JN900	Fleece Blanket	613
JN901	Ladies' Basic-T	67
JN902	Ladies' Tank Top	75
JN903	Ladies' Shirt Long-Sleeved Medium	82
JN906	Ladies' Shirt Long-Sleeved	83
JN911	Men's Slim Fit-T	71
JN912	Men's Slim Fit V-T	70
JN913	Men's Long-Sleeved Medium	82
JN913K	Junior Shirt Long-Sleeved Medium	82
JN916	Men's Shirt Long-Sleeved	83
JN918	Basic Polo	100
JN920	Men's Round-T Pocket	68, 394
JN922	Men's Polo Pocket	395
JN924	Men's Round Sweat Pocket	395
JN926	Ladies' Stretch Round-T	80
JN927	Ladies' Stretch Shirt Long-Sleeved	80
JN928	Ladies' Stretch V-T	81
JN929	Ladies' Stretch V-Shirt Long-Sleeved	81
JN934	Ladies' Polo Tipping	102
JN950	Fleece Blanket	613
JN951	Microfibre Fleece Blanket	616
JN952	Bonded Fleece Blanket	616
JN953	Picnic Blanket	613
JN954	Urban Style Blanket	616
JN955	Cosy Hearth Blanket	615
JN956	Fleece Blanket Basic	617
JN957	Fleece Blanket	617
JN959	Fleece Blanket Checked	615
JN960	Ladies' Lifestyle Hoody	154
JN961	Men's Lifestyle Hoody	154
JN962	Ladies' Lifestyle Zip-Hoody	155
JN963	Men's Lifestyle Zip-Hoody	155
JN964	Men's Plain Polo	118
JN965	Ladies' coldblack® Polo	114
JN966	Men's coldblack® Polo	114
JN969	Ladies' Plain Polo	118
JN970	Ladies' Elastic Top	75
JN971	Ladies' Slim Fit-T	71
JN972	Ladies' Slim Fit V-T	70
JN973	Ladies' Heather T-Shirt	77
JN974	Men's Heather T-Shirt	77
JN975	Ladies' Gypsy T-Shirt	73
JN976	Men's Gypsy T-Shirt	73
JN977	Ladies' Urban T-Shirt	76
JN978	Men's Urban T-Shirt	76
JN979	Ladies' Urban Polo	121
JN980	Men's Urban Polo	121
JN985	Ladies' Polo	106
JN986	Men's Polo	106
JN1000	Men's Winter Softshell Jacket	295
JN1001	Ladies' Winter Softshell Jacket	295
JN1004	Men's Padded Vest	277
JN1005	Ladies' Padded Vest	277
JN1006	Men's Bonded Fleece Jacket	283
JN1010	Men's Outer Jacket	281
JN1011	Ladies' Outer Jacket	281
JN1020	Men's Softshell Jacket	251
JN1021	Ladies' Softshell Jacket	251
JN1022	Men's Softshell Vest	250
JN1023	Ladies' Softshell Vest	250
JN1028	Men's Zip-Off Pants	186
JN1029	Ladies' Zip-Off Pants	186
JN1035	Men's Padded Light Weight Jacket	273
JN1037	Men's Padded Light Weight Vest	272
JN1040	Ladies' Windbreaker	279
JN1041	Men's Windbreaker	279
JN1049	Ladies' Outdoor Hybrid Jacket	293
JN1050	Men's Outdoor Hybrid Jacket	293

Item	Name	Page
JN1051	Ladies' Wintersport Pants	297
JN1052	Men's Wintersport Pants	297
JN1053	Ladies' Wintersport Jacket	296
JN1054	Men's Wintersport Jacket	296
JN1057	Ladies' Tailored Softshell	253
JN1058	Men's Tailored Softshell	253
JN1059	Ladies' Down Jacket	291
JN1060	Men's Down Jacket	291
JN1061	Ladies' Down Vest	290
JN1062	Men's Down Vest	290
JN1073	Ladies' Sailing Jacket	282
JN1074	Men's Sailing Jacket	282
JN1075	Ladies' Maritime Vest	246
JN1076	Men's Maritime Vest	246
JN1077	Ladies' Maritime Jacket	247
JN1078	Men's Maritime Jacket	247
JN1079	Ladies' Quilted Down Vest	288
JN1080	Men's Quilted Down Vest	288
JN1081	Ladies' Quilted Down Jacket	289
JN1082	Men's Quilted Down Jacket	289
JN1087	Ladies' Softshell Jacket	252
JN1088	Men's Softshell Jacket	252
JN1089	Ladies' Lightweight Vest	270
JN1090	Men's Lightweight Vest	270
JN1091	Ladies' Lightweight Jacket	271
JN1092	Men's Lightweight Jacket	271
JN1097	Ladies' Outdoor Jacket	256
JN1098	Men's Outdoor Jacket	256
JN1109	Ladies' Lightweight Vest	268
JN1110	Men's Lightweight Vest	268
JN1111	Ladies' Lightweight Jacket	269
JN1112	Men's Lightweight Jacket	269
JN1113	Ladies' Hybrid Vest	266
JN1114	Men's Hybrid Vest	266
JN1115	Ladies' Hybrid Jacket	267
JN1116	Men's Hybrid Jacket	267
JN1117	Ladies' Rain Jacket	278
JN1118	Men's Rain Jacket	278
JN1119	Ladies' Padded Jacket	265
JN1120	Men's Padded Jacket	265
JN1121	Ladies' Zip-Off Softshell Jacket	254
JN1122	Men's Zip-Off Softshell Jacket	254
JN1123	Ladies' Hybrid Sweat Jacket	276
JN1124	Men's Hybrid Sweat Jacket	276
JN1125	Ladies' Sports Softshell Jacket	255, 317
JN1126	Men's Sports Softshell Jacket	255, 317
JN1127	Ladies' Promo Softshell Vest	244
JN1128	Men's Promo Softshell Vest	244
JN1129	Ladies' Promo Softshell Jacket	245
JN1130	Men's Promo Softshell Jacket	245
JN1131	Ladies' Promo Jacket	280
JN1132	Men's Promo Jacket	280
JN1133	Ladies' Winter Jacket	294
JN1134	Men's Winter Jacket	294
JN1135	Ladies' Padded Vest	264
JN1136	Men's Padded Vest	264
JN1137	Ladies' Down Vest	286
JN1138	Men's Down Vest	286
JN1139	Ladies' Down Jacket	287
JN1140	Men's Down Jacket	287
JN1141	Ladies' Travel Coat	275
JN1142	Men's Travel Coat	275
JN1143	Ladies' Hooded Jacket	242
JN1144	Men's Hooded Jacket	242
JN1145	Ladies' Hooded Softshell Jacket	241
JN1146	Men's Hooded Softshell Jacket	241
JN1147	Ladies' Softshell Jacket	243
JN1148	Men's Softshell Jacket	243

Item	Name	Page
JN1149	Ladies' Down Jacket	284
JN1150	Men's Down Jacket	284
JN1151	Ladies' Hooded Down Jacket	285
JN1152	Men's Hooded Down Jacket	285
JN1153	Ladies' 3-in-1-Jacket	292
JN1154	Men's 3-in-1-Jacket	292
JN1155	Ladies' Padded Jacket	263
JN1156	Men's Padded Jacket	263
JN1157	Ladies' Business Jacket	274
JN1158	Men's Business Jacket	274
JN1161	Ladies' Modern Padded Jacket	233
JN1162	Men's Modern Padded Jacket	233
JN1167	Ladies' Padded Jacket	232
JN1168	Men's Padded Jacket	232
JN1169	Ladies' Softshell Vest	238
JN1170	Men's Softshell Vest	238
JN1171	Ladies' Softshell Jacket	239
JN1172	Men's Softshell Jacket	239
JN1173	Ladies' Wintersport Jacket	<b>NEW</b> 231
JN1174	Men's Wintersport Jacket	<b>NEW</b> 231
JN1175	Ladies' Business Parka	<b>NEW</b> 227
JN1176	Men's Business Parka	<b>NEW</b> 227
JN1177	Ladies' Business Blazer	<b>NEW</b> 191, 228
JN1178	Men's Business Blazer	<b>NEW</b> 191, 228
JN1179	Ladies' Allweather Jacket	<b>NEW</b> 229
JN1180	Men's Allweather Jacket	<b>NEW</b> 229
JN1201	Ladies' Zip-Off Trekking Pants	184
JN1202	Men's Zip-Off Trekking Pants	184
JN1203	Ladies' Trekking Shorts	183
JN1204	Men's Trekking Shorts	183
JN1205	Ladies' Trekking Pants	182
JN1206	Men's Trekking Pants	182
JN1801	Ladies' BIO Stretch-T Work - SOLID -	38, 416
JN1802	Men's BIO Stretch-T Work - SOLID -	38, 416
JN1803	Ladies' BIO Stretch-Longsleeve Work - SOLID -	39, 417
JN1804	Men's BIO Stretch-Longsleeve Work - SOLID -	39, 417
JN1805	Ladies' BIO Stretch-Polo Work - SOLID -	46, 419
JN1806	Men's BIO Stretch-Polo Work - SOLID -	46, 419
JN1807	Ladies' BIO Workwear T-Shirt	40, 380
JN1808	Men's BIO Workwear T-Shirt	40, 380
JN1809	Ladies' Doubleface Work Jacket - SOLID -	153, 421
JN1810	Men's Doubleface Work Jacket - SOLID -	153, 421
JN1811	Workwear Stretch-Bermuda Slim Line	<b>NEW</b> 362
JN1812	Workwear Stretch-Pants Slim Line	363
JN1813	Workwear Pants 4-Way Stretch Slim Line	366
JN1814	Hardshell Workwear Jacket	234, 372
JN1815	Padded Hardshell Workwear Jacket	235, 373
JN1817	Ladies' Structure Fleece Jacket	169, 257, 377
JN1818	Men's Structure Fleece Jacket	169, 257, 377
JN1819	Ladies' Hybrid Jacket	237, 375
JN1820	Men's Hybrid Jacket	237, 375
JN1821	Ladies' Hybrid Vest	236, 374
JN1822	Men's Hybrid Vest	236, 374
JN1823	Ladies' Workwear T-Shirt - STRONG -	41, 468
JN1824	Men's Workwear T-Shirt - STRONG -	41, 468
JN1825	Ladies' Workwear Polo - STRONG -	47, 469
JN1826	Men's Workwear Polo - STRONG -	47, 469
JN1829	Ladies' Signal Workwear Polo	379
JN1830	Men's Signal Workwear Polo	379
JN1832	Workwear Pants Slim Line - STRONG -	475
JN1833	Workwear Pants with Bib - STRONG -	473
JN1837	Ladies' Signal Workwear T-Shirt	378
JN1838	Men's Signal Workwear T-Shirt	378
JN1839	Ladies' Workwear-Longsleeve-T	<b>NEW</b> 381
JN1840	Men's Workwear-Longsleeve-T	<b>NEW</b> 381
JN1841	Ladies' Workwear-Longsleeve Polo	<b>NEW</b> 383
JN1842	Men's Workwear-Longsleeve Polo	<b>NEW</b> 383
JN1843	Ladies' Padded Hybrid Jacket	<b>NEW</b> 369

Item	Name	Page
JN1844	Men's Padded Hybrid Jacket	<b>NEW</b> 369
JN1845	Worker Rain-Pants	<b>NEW</b> 371
JN1846	Worker Rain-Jacket	<b>NEW</b> 371
JN1847	Ladies' Padded Hybrid Vest	<b>NEW</b> 368
JN1848	Men's Padded Hybrid Vest	<b>NEW</b> 368
JN1901	Fleece Blanket	614
JN1902	Fleece Blanket XXL	614
JN1903	Beach Blanket	612
JN3001	Ladies' 5-Pocket-Stretch-Pants	<b>NEW</b> 404
JN3002	Men's 5-Pocket-Stretch-Pants	<b>NEW</b> 404
JN3003	Ladies' Comfort-Pants	<b>NEW</b> 405
JN3004	Men's Comfort-Pants	<b>NEW</b> 405
JN3101	Ladies' Casack	<b>NEW</b> 401
JN3102	Men's Casack	<b>NEW</b> 401
JN3103	Ladies' Stretch-Casack	<b>NEW</b> 403
JN3104	Men's Stretch-Casack	<b>NEW</b> 403
JN5612	POS Rack	622
JN5613	POS Rack Steel	622
JN5620	Garment Rack	623
JN5630	Garment Bag	623
JN7101	Clothes hanger standard	620
JN7108	Clothes hanger with clip	620
JN7137	Clothes hanger small	620
MB001	5 Panel Promo Cap Lightly Laminated	535
MB002	5 Panel Promo Cap Laminated	535
MB003	3 Panel Promo Cap	536
MB004	6 Panel Promo Cap	536
MB006	Bob Hat	539
MB007	Cabrio Cap	536
MB012	Fisherman Piping Hat	539
MB013	Fisherman Piping Hat for Kids	533
MB016	6 Panel Cap Laminated	500
MB018	6 Panel Cap Low-Profile	500
MB022	6 Panel Chef Cap	528
MB024	6 Panel Sandwich Cap	505
MB035	5 Panel Sandwich Cap	538
MB036	Neon-Cap	530
MB038	Racing Cap	508
MB040	Bandana	553
MB041	Bandana Hat	552
MB042	Terry Headband	555
MB043	Terry Wristband	555
MB044	Sporty Wristband	555
MB049	Half-Pipe Sandwich Cap	507
MB070	5 Panel Polyester Mesh Cap	520
MB071	5 Panel Polyester Mesh Cap for Kids	531
MB074	X-Tube Cotton	550
MB091	6 Panel Cap Heavy Cotton	537
MB092	5 Panel Cap Heavy Cotton	537
MB095	Military Cap	512
MB096	Fashion Sunvisor	547
MB135	Club Cap	510
MB420	Guest Towel	609
MB421	Hand Towel	609
MB422	Bath Towel	609
MB423	Sauna Sheet	610
MB424	Bath Sheet	610
MB425	Flannel	610
MB431	Sport Towel	554, 611
MB432	Golf Towel	554, 611
MB435	Flannel	607
MB436	Guest Towel	607
MB437	Hand Towel	608
MB438	Bath Towel	608
MB440	Flannel	56, 604
MB441	Guest Towel	56, 604
MB442	Hand Towel	57, 604
MB443	Bath Towel	57, 605

Item	Name	Page
MB444	Sauna Sheet	58, 605
MB445	Bath Sheet	58, 605
MB447	Ladies' Bathrobe	59, 606
MB448	Men's Bathrobe	59, 606
MB503	Rib-Beanie	586
MB504	Knitted Scarf	586
MB505	Knitted Gloves	586
MB601	6 Panel Groove Cap	506
MB609	Turned 6 Panel Cap Laminated	501
MB610	6 Panel Coolmax® Cap	542
MB6111	6 Panel Raver Cap	497
MB6112	6 Panel Raver Sandwich Cap	504
MB6116	6 Panel Outdoor-Sports-Cap	542
MB6117	5 Panel Cap	503
MB6118	Brushed 6 Panel Cap	503
MB6121	6 Panel VIP Cap	508
MB6123	Sandwich Sunvisor	547
MB6126	6 Panel Softlining Raver Cap	496
MB6128	6 Panel Raver Cap Laminated	496
MB6135	6 Panel Polyester Peach Cap	548
MB6155	6 Panel Pack-a-Cap	548
MB6156	6 Panel Micro-Edge Sports Cap	544
MB6181	Original Flexfit® Cap	526
MB6183	High Performance Flexfit® Cap	527
MB6184	Flexfit® Flat Peak Cap	527
MB6187	Flexfit® Ripstop Sandwich Cap	527
MB6192	Security Cap	530
MB6193	Security Cap for Kids	531
MB6197	6 Panel Double Sandwich Cap	507
MB6202	6 Panel Polyester Cap	545
MB6203	6 Panel Polyamide Cap	511
MB6205	6 Panel Function Cap	542
MB6206	6 Panel Elastic Fit Baseball Cap	526
MB6207	5 Panel Flat Peak Cap	521
MB6210	Selling Cap	626
MB6211	5 Panel Soft Mesh Flat Peak	521
MB6212	6 Panel Brushed Sandwich Cap	502
MB6213	Sport Sunvisor	546
MB6214	6 Panel Sport Mesh Cap	546
MB6215	6 Panel Elastic Fit Mesh Cap	525
MB6216	6 Panel Air Mesh Cap	518
MB6221	Seamless OneTouch Cap	517
MB6222	Seamless OneTouch Flat Peak Cap	517
MB6223	6 Panel Heavy Brushed Cap	498
MB6224	6 Panel Flat Peak Laminated Cap	498
MB6225	Safety Cap	530
MB6226	Dandy Cap	576
MB6227	6 Panel Camouflage Cap	511
MB6228	3 Panel Cap	541
MB6229	6 Panel Mesh Cap	519
MB6230	6 Panel Corduroy Sandwich Cap	499
MB6231	Captain's Cap	513
MB6232	6 Panel Corduroy Cap	499
MB6233	Seamless Mesh Cap	518
MB6234	6 Panel Workwear Cap - SOLID -	409, 529
MB6235	6 Panel Workwear Cap - COLOR -	409, 529
MB6236	6 Panel Cap Bio Cotton	54, 495
MB6237	5 Panel Cap Bio Cotton	54, 495
MB6238	5 Panel Sandwich Cap Bio Cotton	55, 495
MB6239	6 Panel Mesh Cap	516
MB6240	6 Panel Flat Peak Cap	516
MB6241	6 Panel Sports Cap	541
MB6242	Function Hat with Neck Guard	407, 543
MB6243	6 Panel Cap with Neck Guard	407, 543
MB6244	6 Panel Mesh Cap Mélange	515
MB6400	Traditional Bandana	489
MB6404	Cotton Scarf	489
MB6501	6 Panel Piping Cap	510

Item	Name	Page
MB6502	5 Panel Two Tone Cap	506
MB6503	Economic X-Tube Polyester	551
MB6506	6 Panel Turbo Piping Cap	509
MB6508	5 Panel Flat Peak Cap	522
MB6509	6 Panel Flat Peak Cap	523
MB6522	5 Panel Sportive Cap	544
MB6524	Triangular Scarf	553
MB6526	5 Panel Sandwich Cap	504
MB6530	Functional Bandana Hat	552
MB6538	Laser Cut Cap	544
MB6541	Light Brushed Sandwich Cap	502
MB6544	Running 4 Panel Cap	545
MB6550	5 Panel Retro Mesh Cap	519
MB6552	5 Panel Promo Sandwich Cap	538
MB6555	Military Sandwich Cap	512
MB6560	5 Panel Racing Cap Embossed	509
MB6564	Street Style	484
MB6569	Summer Breeze	490
MB6574	6 Panel Craftsmen Cap - STRONG -	528, 410
MB6577	Heather Summer Beanie	491
MB6578	Heather Summer Loop-Scarf	491
MB6580	3 Panel Sports Cap	545
MB6581	6 Panel Pro Cap	524
MB6597	Urban Hat	483
MB6598	Summer Style Hat	483
MB6599	Traveller Hat	483
MB6621	6 Panel Workwear Cap - STRONG -	528, 410
MB6625	Promotion Hat	485
MB6626	Ribbon for Promotion Hat	485
MB6634	6 Panel Pro Cap Style	524
MB6635	Pro Cap Mesh 6 Panel	522
MB6636	Pro Cap Mesh 5 Panel	522
MB6700	Melange Hat	484
MB6701	Fisherman Function Hat	548
MB6702	Flexible Hat	482
MB6703	Trendy Summer Hat	482
MB6704	Summer Hat	482
MB6705	Summer Hat	481
MB7010	5 Panel Kids' Cap	532
MB7018	Military Cap for Kids	533
MB7100	Jersey Beanie	593
MB7102	Knitted Hat	592
MB7103	Wintersport Hat	573
MB7104	Fancy Yarn Hat	579
MB7105	Highloft Fleece Hat	581
MB7109	Cotton Hat	567
MB7111	Basic Knitted Beanie	590
MB7112	Knitted Promotion Beanie	590
MB7113	Bio Cotton Beanie	549, 53
MB7114	Men's Melange Beanie	568
MB7115	Ladies' Melange Beanie	568
MB7116	Traditional Beanie	583
MB7117	Elegant Knitted Beanie	566
MB7118	Casual Long Beanie	568
MB7119	Fine Crocheted Headband	571
MB7120	Fine Crocheted Beanie	571
MB7121	Knitted Fleece Workwear Beanie - STRONG -	594, 410
MB7122	Melange Beanie	567
MB7125	Running Beanie	550
MB7126	Running Headband	550
MB7127	Structured Beanie	594
MB7128	Soft Knitted Beanie	564
MB7129	Ladies' Winter Beanie	564
MB7130	Knitted Beanie	564
MB7131	Fleece Beanie	595
MB7132	Fine Knitted Beanie	577
MB7133	Fine Knitted Gloves	577
MB7134	Camouflage Beanie	566



Item	Name	Page
MB7135	Bio Cotton Headband	549
MB7136	Knitted Headband	575
MB7137	Workwear Beanie	563, 408
MB7138	Striped Winter Beanie	565
MB7139	High Brim Beanie	563, 408
MB7140	Striped Winter Beanie with Pompon	565
MB7141	Reflective Beanie	409
MB7142	Reflective Winter Beanie	<b>NEW</b> 561
MB7143	Ladies' Metallic Beanie	569
MB7144	Knitted Winter Beanie with Pompon	569
MB7145	Soft Knitted Winter Beanie	<b>NEW</b> 562
MB7300	Winter X-Tube	595
MB7302	Roll-Up Scarf	578
MB7303	Fancy Yarn Scarf	579
MB7304	Highloft Fleece Loop	581
MB7305	Traditional Scarf	583
MB7306	Fine Knitted Scarf	587
MB7307	Elegant Loop Scarf	587
MB7308	Elegant Scarf	576
MB7309	Fine Knitted Scarf	577
MB7310	Structured Summer Scarf	488
MB7311	Bright-coloured Scarf	488
MB7312	Bio Cotton Scarf	488, 55
MB7313	Fleece Loop	575
MB7314	Knitted Loop	575
MB7315	Summer Scarf	487
MB7316	Summer Loop	487
MB7317	X-Tube Signal	407
MB7500	Knitted Cap	589
MB7501	Knitted Cap for Kids	588
MB7510	6 Panel Fleece Cap with Earflaps	597
MB7540	Knitted Cap with Pompon	570
MB7550	Knitted Cap	588
MB7551	Knitted Cap Thinsulate™	593
MB7580	Beanie No.1	590
MB7584	Beanie with Contrasting Border	591
MB7611	Fleece Scarf	597
MB7618	Balaclava	599
MB7700	Microfleece Gloves	596
MB7720	Microfleece Cap	596
MB7740	Microfleece Scarf	596
MB7902	Thinsulate™ Fleece Gloves	598
MB7923	Rib Beanie	592
MB7925	Knitted Beanie with Fleece Inset	592
MB7926	Cotton Beanie	594
MB7929	Thinsulate™ Headband	598
MB7930	Thinsulate™ Neckwarmer	598
MB7937	Warm Knitted Cap	593
MB7939	Unicoloured Crocheted Cap with Pompon	572
MB7940	Crocheted Cap with Pompon	571
MB7941	Casual Outsized Crocheted Cap	572
MB7945	Microfleece Cap	599
MB7947	Crocheted Headband	572
MB7948	Touch-Screen Fleece Gloves	600
MB7949	Touch-Screen Knitted Gloves	600
MB7955	Knitted Long Beanie	591
MB7964	Pompon Hat with Contrast Stripe	573
MB7967	Pompon Hat with Brim	570
MB7977	Coarse Knitting Hat	580
MB7978	Melange Scarf Basic	585
MB7979	Melange Hat Basic	585
MB7980	Melange Gloves Basic	585
MB7983	Twisted Loop Scarf	580
MB7984	Wintersport Beanie	573
MB7988	Ribbed Beanie	582
MB7989	Ribbed Scarf	582
MB7990	Roll-Up Beanie	578
MB7992	Urban Beanie	567

Item	Name	Page
MB7993	Urban Knitted Hat	566
MB7994	Promotion Beanie	584
MB7995	Promotion Scarf	584
MB9412	5 Panel Cap	501
MB9503	Shiny Santa Hat	601
MB9715	Cap Stand	625
MB9716	Cap Rack	625
MB9720	Cap-Caper	626



ΚΕΝΤΗΜΑ - ΤΥΠΩΜΑ

## NOVELTIES 2022

! " " # \$ % & # ( ) \* + , - .  
! - # # " ! \$ , %



ΜΟΥΜΑΣ

ΚΕΝΤΗΜΑ - ΤΥΠΩΜΑ





## JAMES & NICHOLSON

BIO	22-59
T-SHIRTS	60-91
POLOS	92-127
SWEAT & FLEECE	128-187
SHIRTS & PULLOVERS	188-223
JACKETS & VESTS	224-297
SPORTS	298-355
WORK	356-477

## myrtle beach

SUMMER HATS & SCARVES	478-491
CAPS	492-557
BEANIES & SCARVES	558-601
TOWELS & BLANKETS	602-617
PUSH THE SALE	618-626

< , %\* 4 '! - % + ( +\* -

Both in textile promotion and in corporate fashion wear **JAMES & NICHOLSON** and **myrtle beach** are meanwhile among the best-known and most popular brands. The product diversity of the two product lines is unparalleled and is expanded every year by around 40 fashionable novelties. In the fields of sports, leisure, business and work there is hardly any top or headgear which is not included in the diverse product line.

**JAMES & NICHOLSON** stands for functional sportswear for almost every sport, for trendy leisurewear and jackets as well as for classic business wear and sturdy workwear. For all everyday situations **JAMES & NICHOLSON** offers suitable clothing for ladies and men. Most basics are available in almost 40 colours as well as in outsizes up to 6XL.

Fashionable and functional headwear as well as trendy accessories, which can be combined very well with the **JAMES & NICHOLSON** collection, that is what **myrtle beach** stands for. The wide range of cap shapes and cap designs is unique and at the same time innovative, for a few of the products of **myrtle beach** are prize-winning. In recent years the Promotional Gift Award has been won several times by clever cap inventions which have definitely enriched the promotional market. The headwear brand is extended by trendy scarfs, gloves and the large spa collection, which offers terry products for sports and the catering trade in more than 20 colours.

The storage capacity of the brands is 20 million pieces, 98% of which are always available. Extremely short delivery times and a smooth handling of direct shipment are a great advantage **JAMES & NICHOLSON** and **myrtle beach** offer their customers. Service takes top priority – in day-to-day business the focus is always on the customer. That is why the quality of the product lines is the most important thing of the company philosophy – from inception to completion and beyond. **JAMES & NICHOLSON** and **myrtle beach** are manufactured with social and ecological responsibility. All the textiles are REACH-compliant and manufactured according to Oeko-Tex® Standard 100. Since 1999 social and environmental aspects have been integrated into the company code of conduct. They are submitted to strict controls.

**This year too, the new collection radiates a zest for life:** always up to the minute in business and therefore trend-, quality- and price-conscious! With **JAMES & NICHOLSON** and **myrtle beach** several price levels from low budget to premium will guarantee excellent value for money for the customer.

**myrtle  
beach**

**JAMES &  
NICHOLSON**

, +! ) " \* ! \$<\$&\$ 3

! " # \$%&' # " ( ) &\$%\* # +

As members of the, BSCI/Business Social Compliance Initiative' we commit ourselves to implementing the BSCI code of conduct as part of our business relations with our manufacturers and thus to improving the working conditions within our supply chain and to producing our textiles fairly. This includes our clear commitment to the employees' right to freedom of assembly, protection against discrimination, and an adequate remuneration, that is, at least the statutory national minimum wage.

Another central component is the occupational safety regulations. That is how we guarantee that the occupational safety regulations of the ILO (International Labour Organisation) are met. Child labour, forced labour or precarious jobs are not tolerated. Several social compliance departments in the countries of production test all the factories thoroughly and make sure that these conditions are met.



) , " - + # - \$' \* "' . ' - / +  
+\* 0 \$ " \* ( +\* -

All the products of **myrtle beach** and **JAMES & NICHOLSON** are produced in an environmentally friendly way.

1 2 %&\$ 3 ' ! - %\* 4 % , 4

The merchandise is regularly tested by certified testing institutes in the countries of production regarding the given parameter. Moreover, in cooperation with SGS, Testex, Hohenstein and other renowned institutes the quality is continually controlled.

" +5" 6- +7<sup>8</sup> ' ! - %\* 4 % , 4 ' 9 : :

This standard guarantees that textile and non-textile product components pose no threat to health.



%4 / + , +\* # + ' - " ' - / + ' ' , + % # / ' 6 ' , + ; 2 & % - \$' \* !

We assure you that when manufacturing our **myrtle beach** products and **JAMES & NICHOLSON** textiles we meet the obligations of the REACH-regulations.

" # ! ' ! - %\* 4 % , 4

When manufacturing garments of **myrtle beach** and **JAMES & NICHOLSON**, the Organic Content Standard is a standard for verifying and tracking the exact content of organically grown materials in a final product. Among other things, the superordinate 'Content Claim Standard' defines with OCS the traceability of merchandise as well as the transparency within the production chain.



Made with 100%  
Organically Grown Cotton  
Certified by CU853836



Made with 50%-95%  
Organically Grown Cotton  
.....



7 ' 8 ' ,3 ' ! - \$ ' ,%,  
! " # \$ % & ' 4 % + & ) ' + ,

! " # \$ % & ' ( ) ' \* & + % " , ! % & % " - . \* ' , / # ) ! ' , 0101

Our goal is for both our products and our corporate values to be geared toward sustainability. We therefore want to take responsibility for the emissions that printing our catalogue produces and give something back to nature in the process. That's why we've become a ClimatePartner and are producing a climate-neutral catalogue. As a ClimatePartner, we've been able to offset the 226,800 kg of CO<sub>2</sub> needed to print this year's catalogue and consequently help plant new forests throughout Germany.

%22- + ' / & % & # ) ,2- + , % ,3' & & ' + , ! " # \$ % & '

The effects of climate change are being felt all over the world, and Germany is no exception. Forest fires are destroying vast swathes of woodland and parasites are spreading rapidly in these now depleted areas. Species of tree such as the spruce are suffering from drought stress and heat damage because their shallow roots cannot reach the deeper layers of the earth that contain water. This is why we support afforestation and want to see more forests in Germany transformed into mixed forests.

! " # \$ % & ' ,4+- & ' ! & # ) ,&5+- \* . 5 ,+ ' . # ) % "  
4+- 6' ! & /

Regional projects protect natural habitats such as native forests and alpine areas, while also contributing towards green agriculture. These projects are important for adapting to climate change. Projects in Germany, Austria and Switzerland generally do not produce certified emission reductions. This is why ClimatePartner combines regional projects with international climate protection projects, as this enables both climate neutrality and regional engagement.





climate neutral 

226,800 KG OF CO<sub>2</sub> OFFSET



! " ! # \$ % & \$ ' % % # )  
\* + , \$ & % . - \* # # \* &

& \* 4 ) . 2 + \$ & # # & . \$ & ' ' " + # 2 & . \$\$\$  
+ ' & # 1 " ( \$ 2 # 1 \$ 2 . " \* \$ ) ' 7 " (

**Fair, transparent, harmless:** The Organic Cotton collection includes a wide range of **sustainably produced** organic cotton clothing for every **fair fashion lover**. The Organic Cotton collection by JAMES & NICHOLSON and myrtle beach impresses with a **high quality** combined with **modern cuts** and **tasteful details**.

The **naturalness** is not only visible but also perceptible. Knowing that the components of the garment are made of **sustainably grown cotton** and that **no genetically modified fibres** are used conveys a completely **new attitude** towards life.

& + ( \$ # ) . - ) \* -

When manufacturing garments of **myrtle beach** and **JAMES & NICHOLSON**, the Organic Content Standard is a standard for verifying and tracking the exact content of organically grown materials in a final product. Among other things, the superordinate 'Content Claim Standard' defines with OCS the traceability of merchandise as well as the transparency within the production chain.



Made with 100%  
Organically Grown Cotton  
Certified by CU853836



Made with 50%–95%  
Organically Grown Cotton  
.....





+ / - ) - ( / 0.1 \* ( ) / ! # / +

! " # \$ % & # # ' " ( \$ \* " \$ " + , + ' " - \$ # & \$ \* " ) # " \$ \$  
) \$ " / \$ ) ( 1 2 & . 3 \$

Plastic bottles collected in the sea are crushed, melted down and spun to yarn again, which is sometimes completely integrated into the production. Thus for producing the workwear cap MB6234 about 3 half-litre bottles are recycled and for the new sport T-shirt JN519 even 25.



for example: plastic bottles



crushing, cleaning, melting



yarn



fabric



product



RECYCLED  
POLYESTER

APPROVED

by **LABTECH** ID123987



COMING TO GRIPS WITH  
THE SUN THANKS TO  
WORKWEAR WITH CER-  
TIFIED UV-PROTECTION

98% SHIELDING  
OF UV-RADIATION

UPF  
50+



# SUN PROTECTION AT WORK

WORKWEAR WITH CERTIFIED UV-PROTECTION

THE MORE UPF, THE BETTER

The UPF (Ultraviolet Protection Factor) indicated on UV-protective clothing shows how much longer somebody wearing these clothes can stay in the sun without suffering any damage to health. Therefore, the UPF-indication on textiles corresponds to the sun protection factor of sunscreens. This is based on the self-protection time of the skin, which varies considerably depending on the individual skin type.



## CORRECTLY ASSESSING THE RISK

### PEOPLE WORKING OUTDOORS

Many people work outdoors all day or part of the day. They have a much higher risk of contracting skin cancer than people working indoors. The same goes for leisure activities outdoors. The sun is your constant companion and supplies the vital vitamin D. But a lot of sun also means: headgear, sunscreen and UV-protective clothing.

### UVA/UVB-RAYS

UV-radiation is especially strong in the months of April to September; from 11 a.m. to 4 p.m.

### THE DANGERS OF UV-RADIATION



UV-RADIATION ALSO EXISTS WHEN THE SUN IS NOT SHINING



ALSO PENETRATES THE CLOUDS



EXISTS INDEPENDENT OF OUTDOOR TEMPERATURE



PENETRATES LOOSE TISSUE



IS REFLECTED BY SURFACES SUCH AS METAL, WATER, CONCRETE

## UV-CLOTHING PROVIDES BETTER PROTECTION THAN SUNSCREEN

The best protection against harmful UV-radiation is provided by certified UV-protective clothing. It shields off radiation, does not have to be applied once again like sunscreen and therefore lasts all day. For the parts of the body uncovered by clothes sunscreen with a high sun protection factor and a headgear should be used.

### AUSTRALIAN/NEW ZEALAND STANDARD AS/NZS 4399:2017

The best-known and worldwide most common standard is the Australian-New Zealand standard. For checking the UV-protective factor according to AS/NZS 4399:2017, the UV-protection is established on a new and dry textile. For this purpose, the solar spectrum of Melbourne, Australia, is reproduced. Clothing marked with the Australian/New Zealand standard provides protection against UVA- and UVB-radiation of sunlight. A product marked with UPF 50+ according to this standard blocks more than 98% of the harmful UV-rays. The textiles protect the parts of the body covered by them.

### TESTED TEXTILE UV-PROTECTION

The LABTECH Prüfungsgesellschaft mbH is officially accredited according to DIN EN ISO/IEC 17025 2005 and based on this standard, they test as an independent laboratory the UV-protective factor of our textiles.

**LABTECH**



**UPF 50+**

APPROVED

by **LABTECH** ID120866

# 6032%. 35\*\*\*



2\$, 5\*6. " \*, " '3%37

Caps with this label are ideal for printing and embroidering. The construction of the caps leaves a lot of space so the cap is easy to decorate, with the logo presented to perfection.



! " # \$ % & \$ ! ' ( ' % ) \* + , # - # \$ ! ' ( ' % ) \* % / \$ , . 0 "

Functional textiles must have the ability to transport moisture from the skin to the fabric surface as fast as possible. Permeability shows how much steam in grams can evaporate on a surface of 1 m<sup>2</sup> within 24 hours. The higher this figure, the more breathable the textile is.



1 \$ % # " \*2. ( 0 - 3

The ability to withstand water pressure without moisture penetrating into the material is given by the water column (mm). The minimum standard is a water column of 1,500 mm.



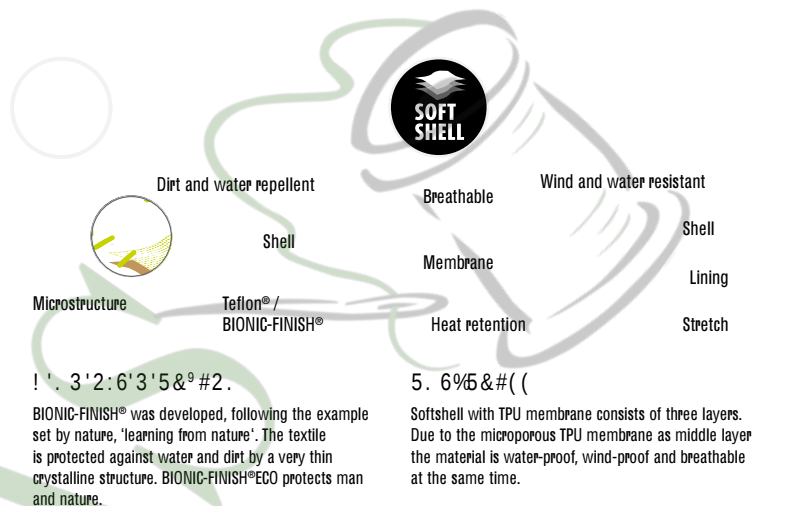
" #2) 2( #4\* , . ( ) #5%#"

**PET bottles are recycled to create a new fashion.** Plastic bottles collected in the sea are crushed, melted down and spun to yarn again, which is sometimes completely integrated into the production. Thus for producing the workwear cap MB6234 about 3 half-litre bottles are recycled and for the new sport T-shirt JN519 even 25.



% \$ , #4 \*5\$# - 5

To avoid moisture penetrating into the fabric, seams and stitches can get taped. Taped seams are 100 % water-proof.



Without easy care

With easy care

Creased shell

#5\$) \*2\$ " #

This special finish makes shirts and blouses especially easy to iron. To preserve this function the textiles should not be overdried in the tumbler and you should avoid using an overheated iron.



Breathable

Drying

Shell

DuPont™ Sorona®

Microstructure

Thermally efficient system

40 , . 3 %8\*5. " . 3 \$°

Sorona® renewably sourced fibre delivers superior performance benefits to today's fashion. Fabrics that use Sorona® are very soft, very strong and dry quickly. Sorona® helps fabrics stretch comfortably and retain their shape. And, it is made with plant-based ingredients. DuPont™ Sorona®. Designed for Performance. Derived from Nature.



Breathable

Drying

Shell

Thinsulate™  
Insulation

Microstructure

Thermally efficient system

%&'350(\$%#8\*350(\$% . 3

The light-weight thermal insulation affords optimum protection against cold despite its minimum thickness. It even keeps you warm in damp or wet conditions. Thinsulate™ INSULATION offers excellent comfort and allows optimum room to move. It is extremely breathable, durable and easy-care.



\*\*, \*6#\$%0" #5



Stretch

LYCRA® fabric

Wrinkle recovery

( ) 2" \$<sup>9</sup>

LYCRA® allows the fabric both to stretch significantly and to retain its shape. Fabrics and garments containing Lycra offer exceptional fit, comfort, freedom of movement and wrinkle recovery.



Shape retention

Breathable

Shape retention

Stretch

LYCRA® fabric

Flexibility

Wrinkle recovery

( ) 2" \$<sup>9</sup> \*5, . " %

LYCRA® Sport fabrics are specifically engineered for sporting activities which require a combination of light weight, breathability, muscle support and freedom of movement.



Tear- and abrasion-proof

High breathability

CORDURA® Shell

Lining

2. " 40" \$<sup>9</sup>

CORDURA® is a very sturdy, textured polyamide fabric, which is extremely tear- and abrasion-proof. Special yarns, specially developed weaving techniques, dyeing methods and additional textile finishing ensure that products with CORDURA® can be used as durable and comfortable workwear.



0, 6?>?@

The UPF (Ultraviolet Protection Factor) indicated on UV-protective clothing shows how much longer somebody wearing these clothes can stay in the sun without suffering any damage to health. Therefore, the UPF-indication on textiles corresponds to the sun protection factor of sun-screens. This is based on the self-protection time of the skin, which varies considerably depending on the individual skin type.



Sun/UV radiation

Sun/UV reflection

Without Coldblack

With Coldblack

Shell

Heating

UV protection

2. ( 4! ( \$ 2 =<sup>9</sup>

Textiles with a coldblack®-finish afford optimum protection against heating up through sun rays. They stay cooler. The effect of this is that the person wearing these garments does not sweat so easily, feels better and is even more efficient. coldblack® is a registered trademark of Schoeller Technologies AG, Switzerland (patent pending).

% , 2. . ( <sup>9</sup>

TOPCOOL® polyester fibres perfectly absorb moisture due to their special surface and evacuate it quickly to the outside where it can evaporate. The skin stays comfortably dry and a constant temperature level of the body is maintained.



2. . ( - \$ < <sup>9</sup> \*

Through the channels of the breathable COOLMAX®-fibre humidity is evacuated extremely fast to the outer layers of the fabric. Thus the body is kept dry. At the same time a natural temperature control of the body is supported.



Without NON IRON finish

With NON IRON



Creased shell

3. 3 \* " . 3 \*

This special finish makes shirts and blouses iron-free: All you have to do is wash them, dry them and put them on. To preserve this function, these textiles should not be overdried in the tumbler and you should avoid using an overheated iron. If necessary, seams can be ironed at a low temperature.

Breathable

Heat exchange

Microstructure

Cooling

Fast drying



2. . ( 4 " ) <sup>9</sup>

Due to the CoolDry® finish moisture is transported to the outside and creates a comfortable feeling. The textiles dry quickly, are breathable and ideal for all activities.

! " # \$ % &  
( !







! " # \$ % & ( ) \* + (   
 \$ \* \* & , - .

Bio - Baumwolle



NEW



Made with 85%  
Organically Grown Cotton  
Certified by CU853836



### 8033 Ladies' Lounge Hoody

Stylish hooded sweatshirt, lightly oversized | High-quality sweat fabric, roughened inside | 85% combed, ring-spun organic cotton | 2-layer hood with cord and cord stopper | Sleeve bands with elasthan, tear-off® label

Outer fabric (300 g/m<sup>2</sup>): 85% cotton, 15% polyester

### 8034 Men's Lounge Hoody

Stylish hooded sweatshirt, lightly oversized | High-quality sweat fabric, roughened inside | 85% combed, ring-spun organic cotton | 2-layer hood with cord and cord stopper | Sleeve bands with elasthan, tear-off® label

Outer fabric (300 g/m<sup>2</sup>): 85% cotton, 15% polyester



vanilla

soft-pink <sup>1</sup>

light-blue

navy

soft-grey

graphite

jade-green

<sup>1</sup> Colour not available for 8034

NEW



Made with 85%  
Organically Grown Cotton  
Certified by CU853836



8035

### Ladies' Lounge Pants

Trendy sweatpants made of organic cotton | High-quality French Terry | 85% combed, ring-spun organic cotton | Attached, elastic waistband with cord | 2 side pockets, 1 back pocket  
Outer fabric (300 g/m<sup>2</sup>): 85% cotton, 15% polyester

8036

### Men's Lounge Pants

Trendy sweatpants made of organic cotton in cargo style | High-quality French Terry | 85% combed, ring-spun organic cotton | Attached, elastic waistband with cord | 2 side pockets, 1 back pocket | 1 cargo pocket with hook and loop fastener on the right leg  
Outer fabric (300 g/m<sup>2</sup>): 85% cotton, 15% polyester



vanilla



navy



graphite



NEW



Made with 85%  
Organically Grown Cotton  
Certified by CU853836

BIO-BAUMWOLLE  
ORGANIC COTTON



8038

## Men's Lounge Shorts

Trendy sweatshorts made of organic cotton, in cargo style | High-quality French Terry | 85% combed, ring-spun organic cotton | Attached, elastic waistband with cord | 2 side pockets, 1 back pocket | 1 cargo pocket with hook and loop fastener on the right leg

Outer fabric: 85% cotton, 15% polyester



vanilla

navy

graphite







Made with 100%  
Organically Grown Cotton  
Certified by CU853836

S M L XL XXL 3XL

XS S M L XL XXL

## 8008 Men's Basic-T

Classic T-shirt for men | 100 % combed ring-spun organic cotton | Single jersey | Round neckline | Sleeve-cuffs with elasthane  
Outer fabric (140 g/m<sup>2</sup>): 100% cotton

## 8007 Ladies' Basic-T

Ladies' T-shirt in classic form | 100% combed ring-spun organic cotton, Single Jersey | Low cut round neckline | Cuffs with elasthane | Slightly waisted | Tear off!® - Label  
Outer fabric (120 g/m<sup>2</sup>): 100% cotton



white stone light-yellow acid-yellow yellow gold-yellow orange dark-orange soft-pink



pink red tomato carmine-red-melange grenadine wine coral raspberry sky-blue cobalt royal



mint pacific turquoise light-denim-melange petrol dark-royal navy ash natural grey-heather mid-grey



graphite black black-heather steel-grey brown lime-green fern-green irish-green dark-green khaki olive









Made with 100%  
Organically Grown Cotton  
Certified by CU853836

XS	S	M	L	XL	XXL
98/104	110/116	122/128	134/140	146/152	158/164

## 8007G Girls' Basic-T

Classic T-shirt for girls | 100 % combed ring-spun organic cotton | Single jersey | Round neckline | Sleeve-cuffs with elasthane | Lightly waisted  
Tear off!®-label  
Outer fabric (140 g/m<sup>2</sup>): 100% cotton

## 8008B Boys' Basic-T



white   acid-yellow   yellow   gold-yellow   orange   pink   red   wine   sky-blue   cobalt



royal   pacific   turquoise   dark-royal   navy   graphite   black   lime-green   fern-green   irish-green









Made with 100%  
Organically Grown Cotton  
Certified by CU853836

## 8002 Men's-T

Men's T-shirt with trendy roll hem | 100% combed ring-spun organic cotton, Single Jersey | Round neckline and sleeves with roll hem  
Tear off!®-Label  
Outer fabric (140 g/m<sup>2</sup>): 100% cotton



white

red



navy

grey-heather

black

## 8001 Ladies'-T

Ladies' T-shirt with trendy roll hem | 100% organic combed ring-spun cotton, Single Jersey | Low cut round neckline and sleeves with roll hem  
Slightly waisted | Tear off!® - Label  
Outer fabric (120 g/m<sup>2</sup>): 100% cotton



white

red



navy

grey-heather

black



Made with 100%  
Organically Grown Cotton  
Certified by CU853836

## 8004 Men's-T Pocket

Men's T-shirt with fashionable breast pocket | 100% combed ring-spun organic cotton, Single Jersey | V-neck with small cuffs | Cuffs with elasthane | Breast pocket with roll hem  
Outer fabric (140 g/m<sup>2</sup>): 100% cotton



white

red



navy

black

black-heather

## 8003 Ladies'-T Pocket

Ladies' T-shirt with fashionable breast pocket | 100% combed ring-spun organic cotton, Single jersey | Low cut round neckline | Cuffs with elasthane | Breast pocket with roll hem  
Outer fabric (120 g/m<sup>2</sup>): 100% cotton



white

red



navy

black

black-heather





Made with 100%  
Organically Grown Cotton  
Certified by CU853836

## 8005 Ladies' Casual-T

Ladies' T-shirt in casual style | 100% combed ring-spun organic cotton, Single Jersey | Low cut round neckline | Cuffs with elasthane | Overcut shoulder | Short roll-up sleeves | Casual fit | Tear off!® - Label  
Outer fabric (120 g/m<sup>2</sup>): 100% cotton



white



soft-pink



soft-grey



black



soft-green



Made with 100%  
Organically Grown Cotton  
Certified by CU853836



## 8017 Ladies' Slub-Top

Ladies' tank top in vintage look | Single jersey made of slub yarn and combed ring-spun organic cotton | Elaborate Spray Print technique  
Two-ply roll hem | Narrow bands on neckline and armlines | Lightly waisted  
Outer fabric (130 g/m<sup>2</sup>): 100% cotton



soft-pink



chili



horizon-blue



denim



light-grey



graphite



dusty-olive





Made with 100%  
Organically Grown Cotton  
Certified by CU853836



## 8015 Ladies' Slub-T

Ladies' T-shirt in vintage look | Single jersey made of slub yarn and combed ring-spun organic cotton | Elaborate Spray Print technique | Two-ply roll edge on neckline, sleeves and waistband  
Outer fabric (130 g/m<sup>2</sup>): 100% cotton



soft-pink

chili

horizon-blue

## 8016 Men's Slub-T

Men's T-shirt in vintage look | Single jersey made of slub yarn and combed ring-spun organic cotton | Elaborate Spray Print technique | V-neck, sleeve-cuffs with elasthane  
Outer fabric (150 g/m<sup>2</sup>): 100% cotton



soft-pink

chili

horizon-blue



denim

light-grey

graphite

dusty-olive



denim

light-grey

graphite

dusty-olive





Made with 95%  
Organically Grown Cotton  
Certified by CU853836



## JN1802

### Men's BIO Stretch-T Work - SOLID -

## JN1801

### Ladies' BIO Stretch-T Work - SOLID -

T-shirt made of soft elastic single jersey | Combed ring-spun organic cotton, round neckline | Neck band with elasthane, neck tape | Washable at 40°C, suitable for tumble drying | JN1801: lightly waisted

Outer fabric (180 g/m<sup>2</sup>): 95% cotton, 5% elastane | Outer fabric (180 g/m<sup>2</sup>): 85% cotton, 10% viscose, 5% elastane (grey-heather)

white

red

royal

turquoise

navy

grey-heather

grey-heather

carbon

black

lime-green

dark-green

olive



Made with 95%  
Organically Grown Cotton  
Certified by CU853836



## JN1804

### Men's BIO Stretch-Longsleeve Work - SOLID -

Long-sleeved T-shirt made of soft elastic single jersey | Combed ring-spun organic cotton, round neckline | Neck band with elasthane, neck tape | Washable at 40°C, suitable for tumble drying | JN1803: lightly waisted  
Outer fabric (180 g/m<sup>2</sup>): 95% cotton, 5% elastane | Outer fabric (180 g/m<sup>2</sup>): 85% cotton, 10% viscose, 5% elastane (grey-heather)

## JN1803

### Ladies' BIO Stretch-Longsleeve Work - SOLID -

white

red

royal

turquoise

navy

carbon

grey-heather

carbon

black

lime-green

dark-green

olive





60°



Made with 50%  
Organically Grown Cotton  
Certified by CU853836

**JN1807**

**Ladies' BIO Workwear T-Shirt**

Hard-wearing and easy-care T-Shirt | Mixed fabrics: combed ring-spun organic cotton and | polyester for optimum shape retention and washing resistance | Neck band with elasthane, neck tape | Washable at 60°C, suitable for tumble drying | JN1807: V-neck, lightly waisted  
Outer fabric (160 g/m²): 50% cotton, 50% polyester

**JN1808**

**Men's BIO Workwear T-Shirt**

white

stone

gold-yellow

orange

red

wine

aqua

royal

turquoise

navy

grey-heather

dark-grey

carbon

black

brown

lime-green

dark-green





Made with 50%  
Organically Grown Cotton  
Certified by CU853836



### JN1823 Ladies' Workwear T-Shirt - STRONG -

Durable, easy care T-shirt with contrasting insets | Material mix of combed, ring-spun organic cotton and recycled polyester for optimum shape retention and washing resistance | Contrasting insets on the side and shoulder | Neck band with elasthane, neck tape | Washable at 60°C, suitable for tumble-drying | JN1823: lightly waisted  
Outer fabric (180 g/m<sup>2</sup>): 50% cotton, 50% polyester (recycled)

### JN1824 Men's Workwear T-Shirt - STRONG -

Durable, easy care T-shirt with contrasting insets | Material mix of combed, ring-spun organic cotton and recycled polyester for optimum shape retention and washing resistance | Contrasting insets on the side and shoulder | Neck band with elasthane, neck tape | Washable at 60°C, suitable for tumble-drying | JN1824: lightly waisted  
Outer fabric (180 g/m<sup>2</sup>): 50% cotton, 50% polyester (recycled)



white/carbon

stone/black

red/black

royal/navy

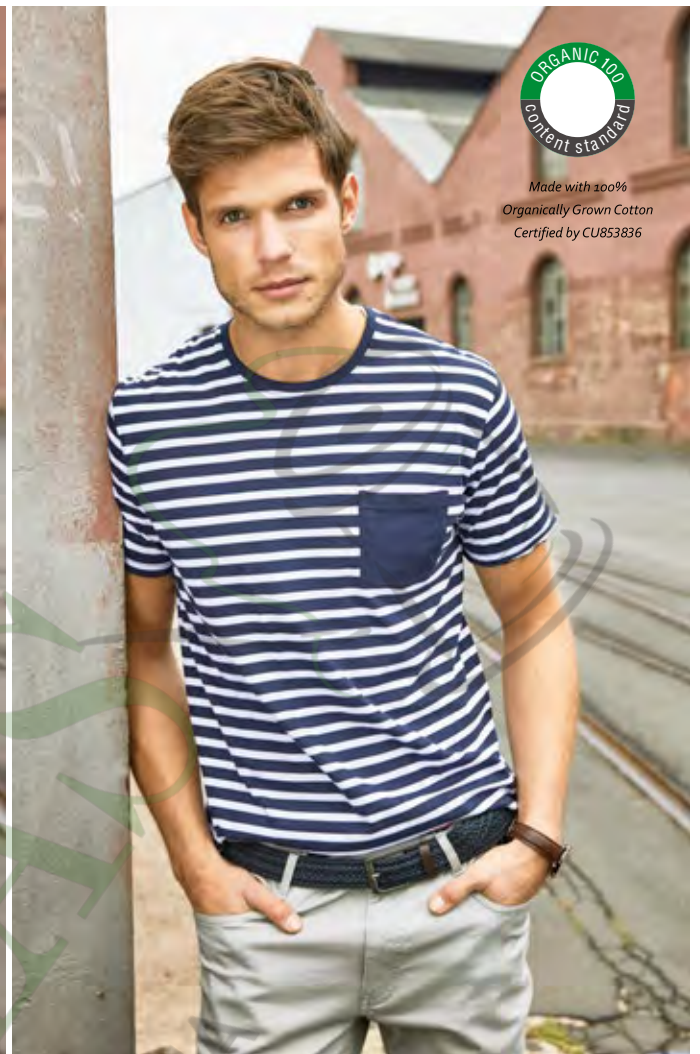
navy/navy

carbon/black

black/carbon

dark-green/black

red/black



## 8027 Ladies' T-Shirt Striped

T-shirt in maritime look with breast pocket | 100 % combed, ring-spun organic cotton, single jersey, round neck | Two-ply rolled hem on sleeves and waistband | Neckband with elastane | 8027: lightly waisted | Tear off®-label  
Outer fabric (140 g/m²): 100% cotton



white/navy

red/white



atlantic/white

navy/white

## 8028 Men's T-Shirt Striped



white/navy

red/white



atlantic/white

navy/white





## 8030 Men's Polo Striped

Polo shirt in maritime look with breast pocket | Fine piqué quality made of 100% combed, ring-spun organic cotton | Knitted polo collar | Sleeve cuffs, breast pocket, buttons and button-placket on the inside in contrasting colour | Side slits | 8029: waisted form, 5 buttons | 8030: 3 buttons  
Outer fabric (180 g/m<sup>2</sup>): 100% cotton

## 8029 Ladies' Polo Striped



white/navy

red/white



white/navy

red/white



atlantic/white

navy/white



atlantic/white

navy/white





Made with 100%  
Organically Grown Cotton  
Certified by CU853836

## 8010 Men's Basic Polo

## 8009 Ladies' Basic Polo

Classic poloshirt | Fine piqué made of 100% combed ring-spun organic cotton | Knitted polo collar and sleeve cuffs | Buttons tone in tone, side slits  
Tear off!®-label | 8009: waisted, 4 buttons | 8010: 2 buttons  
Outer fabric (180 g/m<sup>2</sup>): 100% cotton



white



stone



light-yellow



orange



dark-orange



pink



red



carmine-red-  
melange



wine



cobalt



royal



turquoise



light-denim-  
melange



navy



natural



grey-heather



graphite



black



black-heather



brown



lime-green



fern-green



irish-green



Made with 50%  
Organically Grown Cotton  
Certified by CU853836



Made with 50%  
Organically Grown Cotton  
Certified by CU853836



## JN874

### Men's BIO Workwear Polo

Easy-care, durable polo shirt | Mixed materials made of combed, ring-spun organic cotton and polyester for optimum shape-retention and washability  
Knitted polo collar and sleeve cuffs | Neck tape | JN873: Button placket with 4 buttons, side slits | JN874: Button placket with 3 buttons | Washable up to 60 degrees, suitable for tumble drying  
Outer fabric (200 g/m<sup>2</sup>): 50% cotton, 50% polyester

## JN873

### Ladies' BIO Workwear Polo

white

stone

gold-yellow

orange

red

wine

aqua

royal

turquoise

navy

grey-heather

dark-grey

carbon

black

brown

lime-green

dark-green



Made with 94%  
Organically Grown Cotton  
Certified by CU853836



## JN1806

### Men's BIO Stretch-Polo Work - SOLID -

## JN1805

### Ladies' BIO Stretch-Polo Work - SOLID -

Polo shirt made of soft elastic piqué | Combed ring-spun organic cotton | Knitted polo collar and sleeve-bands, side slits | Washable at 40°C, suitable for tumble drying | JN1805: button placket with 4 buttons, lightly waisted | JN1806: button placket with 3 buttons

Outer fabric (210 g/m<sup>2</sup>): 94% cotton, 6% elastane | Outer fabric (210 g/m<sup>2</sup>): 84% cotton, 10% viscose, 6% elastane (grey-heather)

white

red

royal

turquoise

navy

olive

grey-heather

carbon

black

lime-green

dark-green

olive





Made with 50%  
Organically Grown Cotton  
Certified by CU853836



## JN1825 Ladies' Workwear Polo - STRONG -

## JN1826 Men's Workwear Polo - STRONG -

Durable, easy care polo shirt with contrasting insets | Material mix of combed, ring-spun organic cotton and recycled polyester for optimum shape retention and washing resistance | Contrasting insets on the side and shoulder | Knitted polo collar, neck tape | JN1826: Button placket with 3 buttons | JN1825: Button placket with 4 buttons | Washable at 60°C, suitable for tumble-drying  
Outer fabric (200 g/m<sup>2</sup>): 50% cotton, 50% polyester (recycled)

white/carbon

stone/black

red/black

royal/navy

navy/navy

navy/navy

carbon/black

black/carbon

dark-green/black







## 8022 Men's Sweat

## 8021 Ladies' Sweat

Classic sweatshirt with raglan sleeves | High-quality French terry, 85% combed, ring-spun organic cotton | Classic round neck, necktape | Collar and sleeve-bands with elasthan | Collar patch | Tear off-label | 8021: lightly waisted  
Outer fabric (300 g/m<sup>2</sup>): 85% cotton, 15% polyester



white acid-yellow orange rose-melange red



carmine-red-melange burgundy-melange wine glacier-melange cobalt royal-heather



turquoise light-denim-melange petrol-melange navy ink-melange ash



grey-heather graphite black black-heather lime-green olive



ink-melange





S M L XL XXL 3XL 4XL 5XL



XS S M L XL XXL 3XL

## 8024 Men's Hoody

## 8023 Ladies' Hoody

Hooded sweatshirt with raglan sleeves | High-quality sweat fabric with roughened inside | 85% combed, ring-spun organic cotton | Two-layer hood with drawcord | Lateral dividing seams at the front, kangaroo pocket | Sleeve-bands with elasthane | Tear off!®-label | 8023: lightly waisted  
Outer fabric (300 g/m<sup>2</sup>): 85% cotton, 15% polyester



white acid-yellow orange rose-melange red



carmine-red-melange burgundy-melange wine glacier-melange cobalt royal-heather



turquoise light-denim-melange petrol-melange navy ink-melange ash



glacier-melange



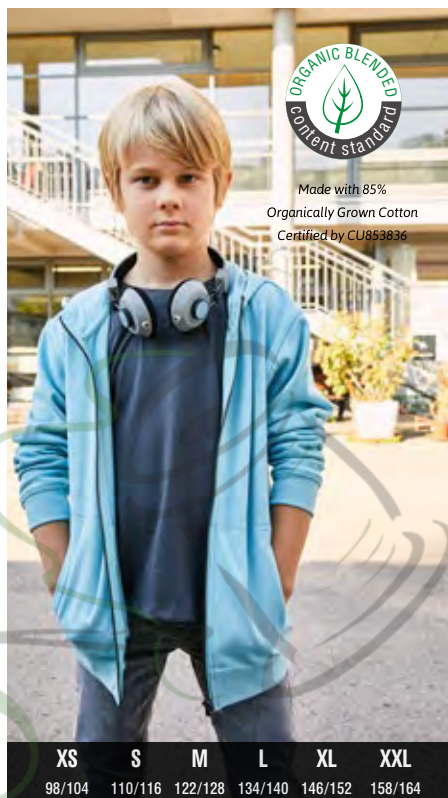
grey-heather graphite black black-heather lime-green olive



S M L XL XXL 3XL 4XL 5XL



XS S M L XL XXL 3XL



XS S M L XL XXL  
98/104 110/116 122/128 134/140 146/152 158/164

## 8026 Men's Zip Hoody

## 8025 Ladies' Zip Hoody

## 8026K Children's Zip Hoody

Hooded sweat jacket with zip | High-quality French terry | 85% combed, ring-spun organic cotton | Two-layer hood with drawcord | Lateral dividing seams at the front, kangaroo pocket | Sleeve-bands with elasthane | YKK-zip | Tear off!®-label | 8025: lightly waisted  
Outer fabric (300 g/m<sup>2</sup>): 85% cotton, 15% polyester



white acid-yellow orange rose-melange red carmine-red-melange burgundy-melange wine glacier-melange cobalt royal-heather



turquoise light-denim-melange petrol-melange navy ink-melange ash grey-heather graphite black black-heather lime-green olive





35-38 39-41 42-44 45-47

### 8031 Bio Sneaker Socks

Classic short socks with a high content of organic cotton | Elastic cuff with Lycra® | Flat toe seam | Reinforced toe and heel part  
Outer fabric: 75% cotton, 23% polyamide, 2% elastane



white navy black



35-38 39-41 42-44 45-47

### 8032 Bio Socks

Classic socks with a high content of organic cotton | Elastic cuff with Lycra® | Flat toe seam | Reinforced toe and heel part  
Outer fabric: 75% cotton, 23% polyamide, 2% elastane



white navy black



Made with 100%  
Organically Grown Cotton  
Certified by CU853836



## MB7113 Bio Cotton Beanie

Fashionable beanie in casual style | Narrow roll hem | 100% combed ring-spun organic cotton | Single jersey | Tear off!®-label  
Outer fabric (120 g/m<sup>2</sup>): 100% cotton



carmin-red-  
melange



wine



light-denim-  
melange



navy



grey-heather



graphite

black

black-heather

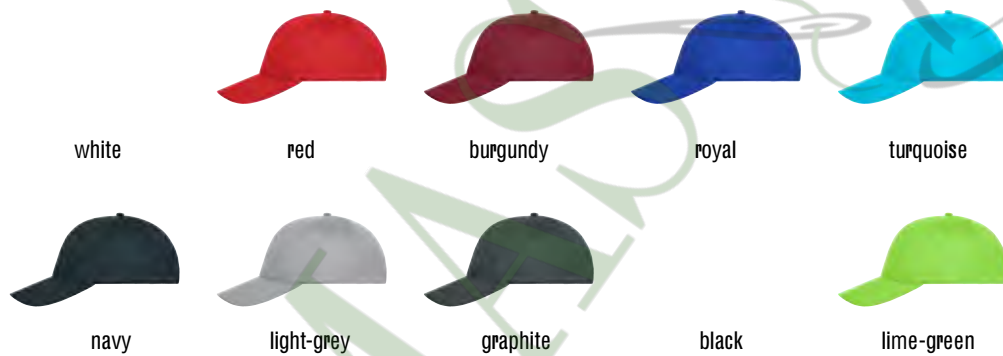




## MB6236 6 Panel Cap Bio Cotton

6 panel cap with unbrushed surface | 6 embroidered ventilation holes | 6 decorative stitching lines on the peak | Laminated front panels | Pleasant to wear thanks to the lined satin sweatband | Hook and loop fastener

Outer fabric (190 g/m<sup>2</sup>): 100% cotton (organic cotton)



## MB6237 5 Panel Cap Bio Cotton

5 panel cap with unbrushed surface | 4 embroidered ventilation holes | 6 decorative stitching lines on the peak | Laminated front panel | Pleasant to wear thanks to the lined satin sweatband | Hook and loop fastener

Outer fabric (190 g/m<sup>2</sup>): 100% cotton (organic cotton)





**MB6238**

### 5 Panel Sandwich Cap Bio Cotton

5 panel cap with unbrushed surface | 4 embroidered ventilation holes |  
6 decorative stitching lines on the peak | Laminated front panel |  
Pleasant to wear thanks to the lined satin sweatband | Hook and loop  
fastener

Outer fabric (190 g/m²): 100% cotton (organic cotton)



white/navy

red/white

burgundy/  
black

royal/white

turquoise/  
white

navy/white

light-grey/  
black

graphite/red

black/white

lime-green/  
white

**MB7312**

### Bio Cotton Scarf

Pleasantly warm cotton scarf | Short, fine fringe along the edges of the  
scarf | Fashionable colourways | Measurements: 180 x 50 cm

Outer fabric (65 g/m²): 100% cotton



Made with 100%  
Organically Grown Cotton  
Certified by CU853836



chili/natural



denim/natural



olive/natural





Made with 100%  
Organically Grown Cotton  
Certified by CU853836



Made with 100%  
Organically Grown Cotton  
Certified by CU853836

## MB440 Flannel

Flannel in fashionable design | Pleasantly soft cotton terry, combed ring-spun organic-cotton | Optimum absorbency | Selection of fashionable, bright colours | 15 x 21 cm  
Outer fabric (420 g/m<sup>2</sup>): 100% cotton

## MB441 Guest Towel

Guest towel in fashionable design | Pleasantly soft cotton terry, combed ring-spun organic-cotton | Optimum absorbency | Selection of fashionable, bright colours | 30 x 50 cm  
Outer fabric (420 g/m<sup>2</sup>): 100% cotton





Made with 100%  
Organically Grown Cotton  
Certified by CU853836



## MB442 Hand Towel

Towel in fashionable design | Pleasantly soft cotton terry, combed ring-spun organic-cotton | Optimum absorbency | Selection of fashionable, bright colours | 50 x 100 cm  
Outer fabric (420 g/m<sup>2</sup>): 100% cotton

## MB443 Bath Towel

Bath towel in fashionable design | Pleasantly soft cotton terry, combed ring-spun organic-cotton | Optimum absorbency | Selection of fashionable, bright colours | 70 x 140 cm  
Outer fabric (420 g/m<sup>2</sup>): 100% cotton

white

acid-yellow

yellow

red

grenadine

orient-red

fuchsia

cobalt

royal

navy

silver

mid-grey

graphite

black

dark-green



silver





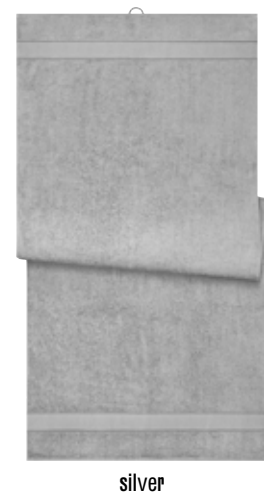
Made with 100%  
Organically Grown Cotton  
Certified by CU853836

#### MB444 Sauna Sheet

Sauna sheet in fashionable design | Pleasantly soft cotton terry, combed ring-spun organic-cotton | Optimum absorbency | Selection of fashionable, bright colours | 70 x 180 cm  
Outer fabric (420 g/m<sup>2</sup>): 100% cotton

#### MB445 Bath Sheet

Bath towel in fashionable design | Pleasantly soft cotton terry, combed ring-spun organic-cotton | Optimum absorbency | Selection of fashionable, bright colours | 100 x 150 cm  
Outer fabric (420 g/m<sup>2</sup>): 100% cotton



silver



Made with 100%  
Organically Grown Cotton  
Certified by CU853836



S/M

L/XL

XXL/3XL

S/M

L/XL

XXL/3XL

## MB447 Ladies' Bathrobe

Bath robe in fashionable design | Pleasantly soft cotton terry, combed ring-spun organic-cotton | Optimum absorbency  
Outer fabric (320 g/m<sup>2</sup>): 100% cotton

## MB448 Men's Bathrobe



white



orient-red



white



orient-red



navy



graphite



navy



graphite





ΜΟΥΜΑΣ

ΚΕΝΤΗΜΑ - ΤΥΠΩΜΑ









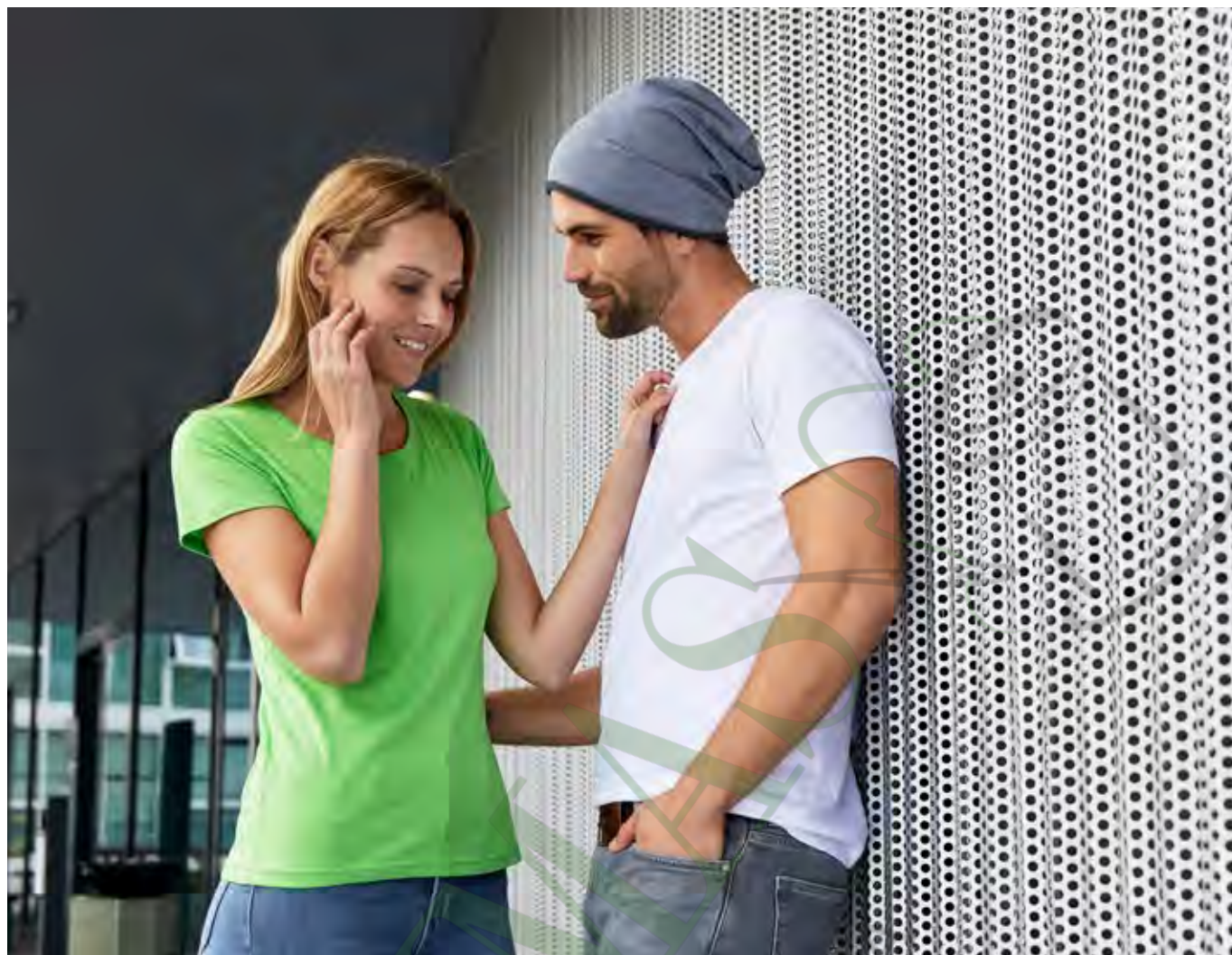




XS	S	M	L	XL	XXL	XS	S	M	L	XL	XXL
98/104	110/116	122/128	134/140	146/152	158/164	98/104	110/116	122/128	134/140	146/152	158/164











S M L XL XXL

S M L XL XXL 3XL 4XL 5XL

S M L XL XXL 3XL

XS	S	M	L	XL	XXL
98/104	110/116	122/128	134/140	146/152	158/164





ΜΥΡΤΙΔΑΣ  
ΚΕΝΤΗΜΑ - ΤΥΠΩΜΕΝΟ











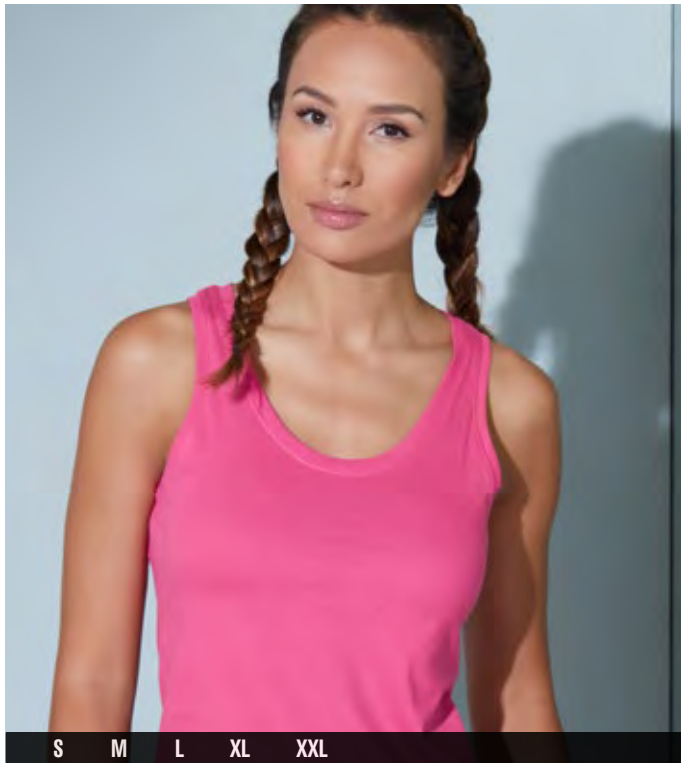










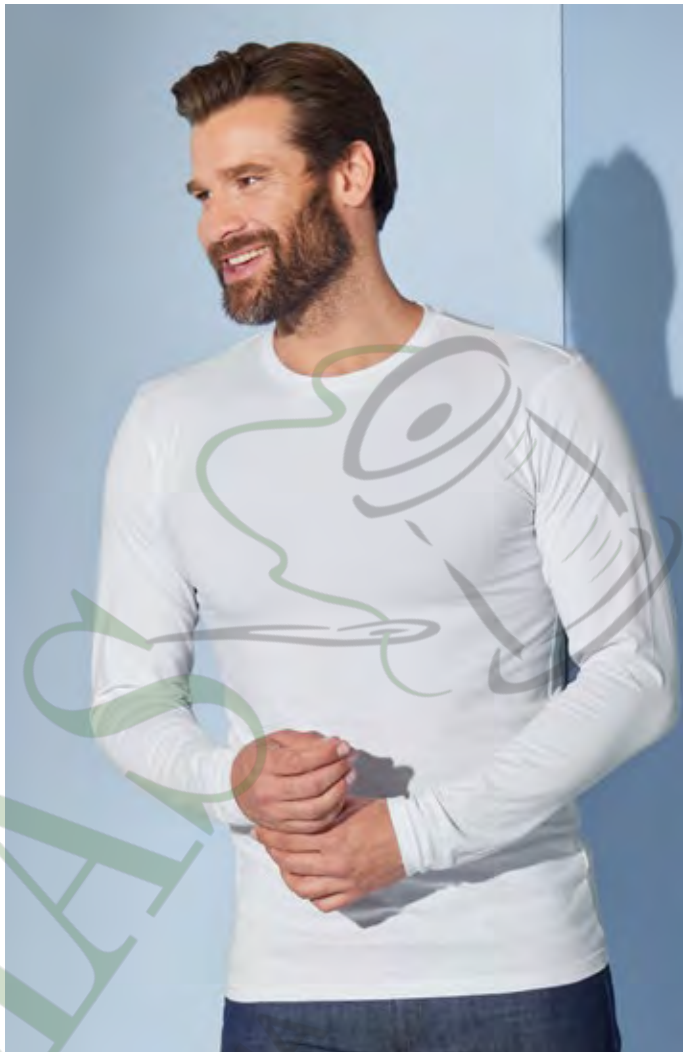




















S	M	L	XL	XXL	3XL
---	---	---	----	-----	-----

XS	S	M	L	XL	XXL
98/104	110/116	122/128	134/140	146/152	158/164



















MYRTLE BEACH  
KENTHMA - ΤΥΠΩΜΑ



M	L	XL	XXL
122/128	134/140	146/152	158/164

XS	S	M	L	XL	XXL	3XL
----	---	---	---	----	-----	-----

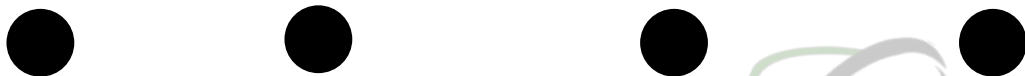






NTOTUMAS  
KENTHMA - ΤΥΠΟΜΑ

NEW



ΑΠΟΘΥΜΑΣ  
—  
ΚΕΝΤΗΜΑ - ΤΥΠΩΜΑ





ΜΟΥΜΑΣ

ΚΕΝΤΗΜΑ - ΤΥΠΩΜΑ











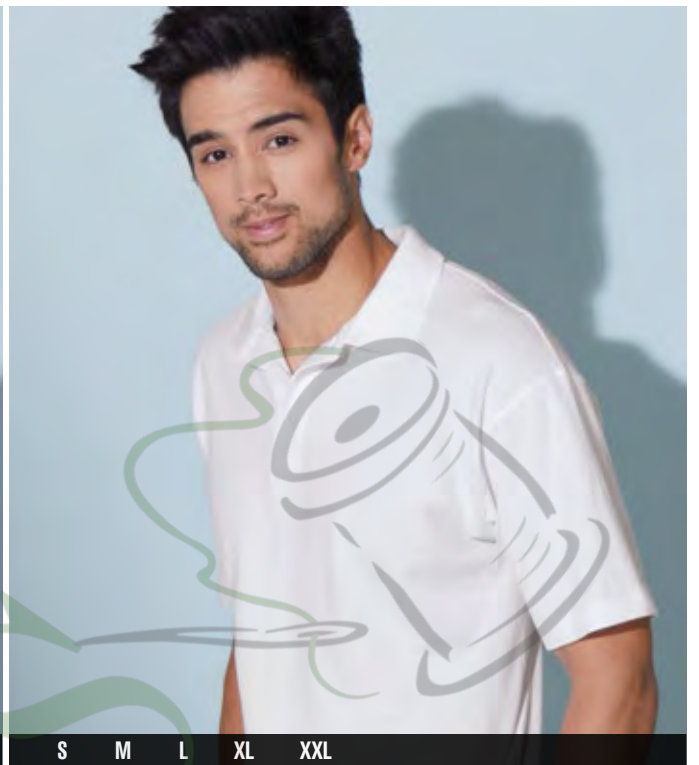


S	M	L	XL	XXL	3XL	S	M	L	XL	XXL	XS	S	M	L	XL	XXL
											98/104	110/116	122/128	134/140	146/152	158/164





S M L XL XXL 3XL 4XL 5XL



S M L XL XXL











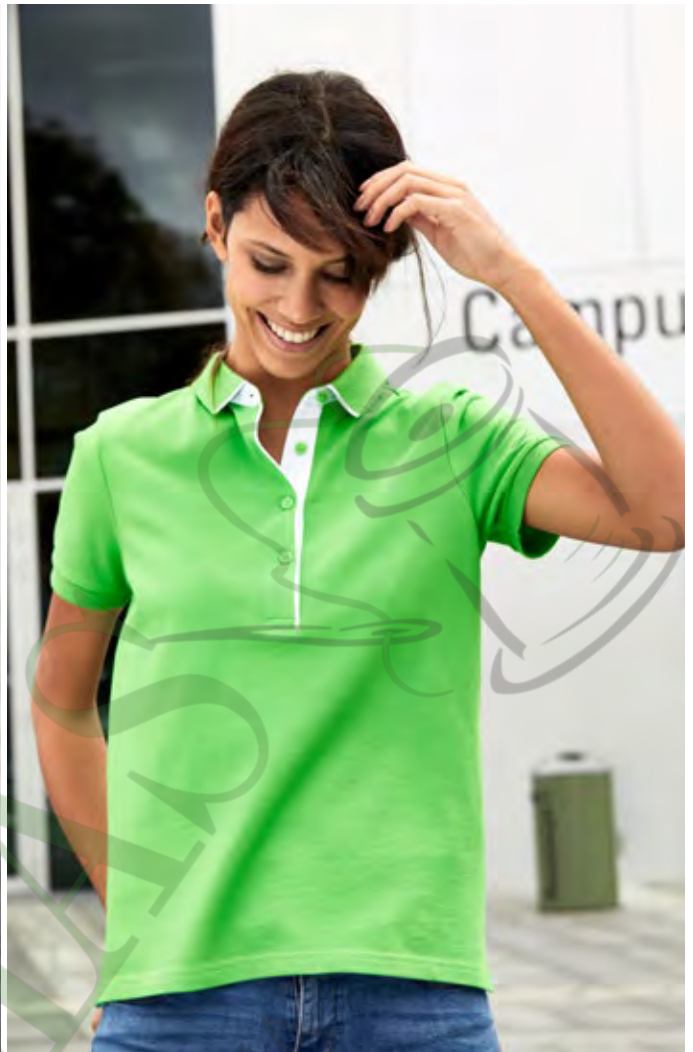
































S M L XL XXL











coldblack®  
a coolmax® technology

UPF  
50+





























S M L XL XXL 3XL











NTO JUM  
ΚΕΝΤΗΜΑ - ΤΥΠΩΜΑ





ΜΠΟΤΟΜΑΣ  
ΚΕΝΤΗΜΑ - ΤΥΠΟΜΑ





ΜΟΥΜΑΣ

ΚΕΝΤΗΜΑ - ΤΥΠΩΜΑ







S M L XL XXL 3XL 4XL 5XL



XS S M L XL XXL 3XL







XS S M L XL XXL 3XL



S M L XL XXL 3XL 4XL 5XL



XS	S	M	L	XL	XXL
98/104	110/116	122/128	134/140	146/152	158/164





XS S M L XL XXL 3XL S M L XL XXL 3XL 4XL 5XL







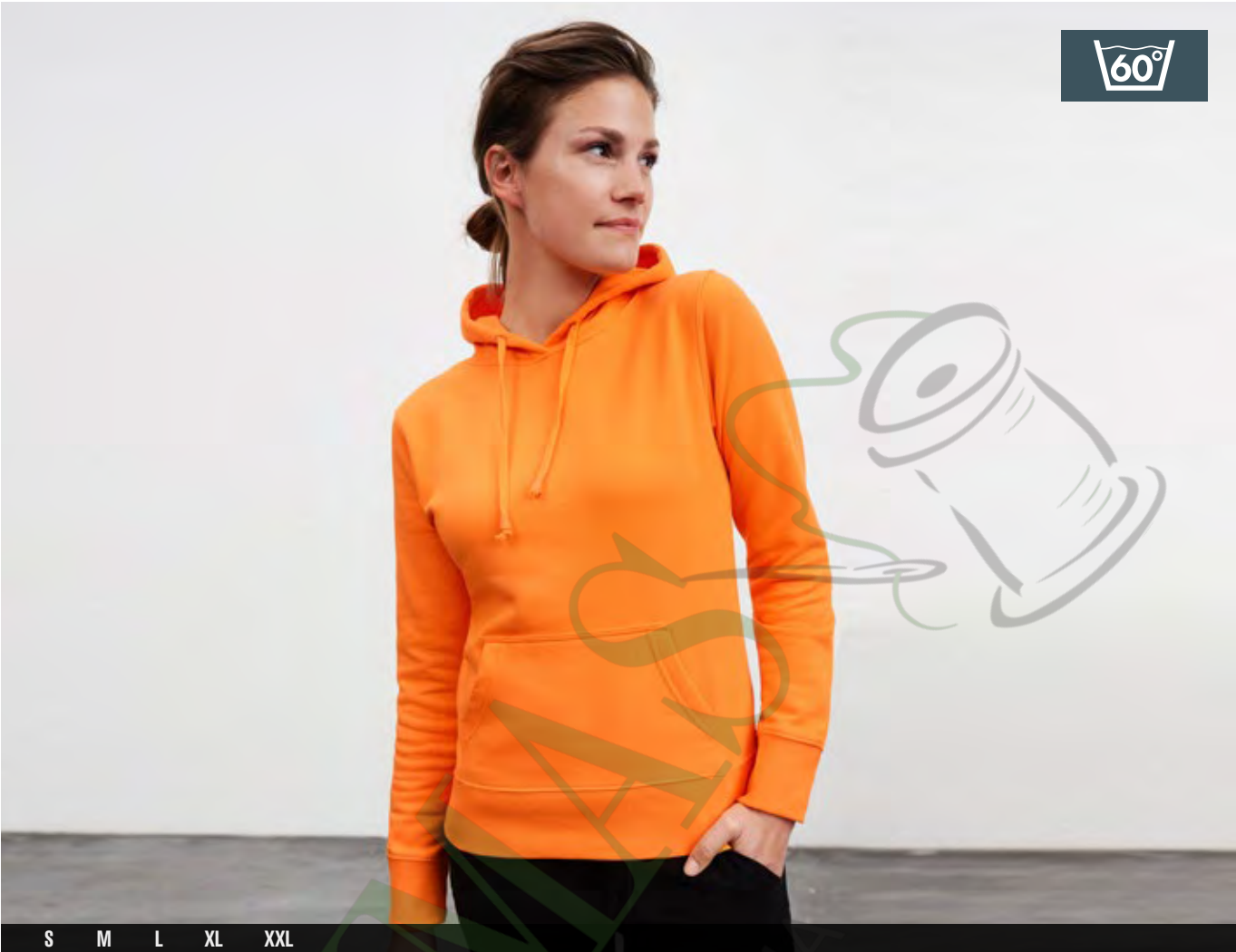




60°

S M L XL XXL 3XL 4XL 5XL





S M L XL XXL

































































60°

XS	S	M	L	XL	XXL
98/104	110/116	122/128	134/140	146/152	158/164



myrtle  
beach

JAMES &  
NICHOLSON









S M L XL XXL







XS	S	M	L	XL	XXL
98/104	110/116	122/128	134/140	146/152	158/164







S M L XL XXL



S M L XL XXL











































































ΜΟΥΜΑΣ

ΚΕΝΤΗΜΑ - ΤΥΠΩΜΑ





ΜΟΥΜΑΣ

ΚΕΝΤΗΜΑ - ΤΥΠΩΜΑ



ΜΟΥΜΑΣ

ΚΕΝΤΗΜΑ - ΤΥΠΩΜΑ





ΜΟΥΜΑΣ

ΚΕΝΤΗΜΑ - ΤΥΠΩΜΑ



ΜΟΥΜΑΣ

ΚΕΝΤΗΜΑ - ΤΥΠΩΜΑ



ΜΟΥΜΑΣ

ΚΕΝΤΗΜΑ - ΤΥΠΩΜΑ





ΜΟΥΜΑΣ

ΚΕΝΤΗΜΑ - ΤΥΠΩΜΑ



ΜΟΥΜΑΣ

ΚΕΝΤΗΜΑ - ΤΥΠΩΜΑ



ΜΟΥΜΑΣ

ΚΕΝΤΗΜΑ - ΤΥΠΩΜΑ





ΜΟΥΜΑΣ

ΚΕΝΤΗΜΑ - ΤΥΠΩΜΑ



ΜΟΥΜΑΣ

ΚΕΝΤΗΜΑ - ΤΥΠΩΜΑ



ΜΟΥΜΑΣ

ΚΕΝΤΗΜΑ - ΤΥΠΩΜΑ





ΜΟΥΜΑΣ

ΚΕΝΤΗΜΑ - ΤΥΠΩΜΑ



ΜΟΥΜΑΣ

ΚΕΝΤΗΜΑ - ΤΥΠΩΜΑ



ΜΟΥΜΑΣ

ΚΕΝΤΗΜΑ - ΤΥΠΩΜΑ





ΜΟΥΜΑΣ

ΚΕΝΤΗΜΑ - ΤΥΠΩΜΑ



ΜΟΥΜΑΣ

ΚΕΝΤΗΜΑ - ΤΥΠΩΜΑ



ΜΟΥΜΑΣ

ΚΕΝΤΗΜΑ - ΤΥΠΩΜΑ





ΜΟΥΜΑΣ

ΚΕΝΤΗΜΑ - ΤΥΠΩΜΑ



ΜΟΥΜΑΣ

ΚΕΝΤΗΜΑ - ΤΥΠΩΜΑ



ΜΟΥΜΑΣ

ΚΕΝΤΗΜΑ - ΤΥΠΩΜΑ





ΜΟΥΜΑΣ

ΚΕΝΤΗΜΑ - ΤΥΠΩΜΑ



ΜΟΥΜΑΣ

ΚΕΝΤΗΜΑ - ΤΥΠΩΜΑ



ΜΟΥΜΑΣ

ΚΕΝΤΗΜΑ - ΤΥΠΩΜΑ





ΜΟΥΜΑΣ

ΚΕΝΤΗΜΑ - ΤΥΠΩΜΑ



ΜΟΥΜΑΣ

ΚΕΝΤΗΜΑ - ΤΥΠΩΜΑ



ΜΟΥΜΑΣ

ΚΕΝΤΗΜΑ - ΤΥΠΩΜΑ





ΜΟΥΜΑΣ

ΚΕΝΤΗΜΑ - ΤΥΠΩΜΑ



ΜΟΥΜΑΣ

ΚΕΝΤΗΜΑ - ΤΥΠΩΜΑ



ΜΟΥΜΑΣ

ΚΕΝΤΗΜΑ - ΤΥΠΩΜΑ





ΜΟΥΜΑΣ

ΚΕΝΤΗΜΑ - ΤΥΠΩΜΑ



ΜΟΥΜΑΣ

ΚΕΝΤΗΜΑ - ΤΥΠΩΜΑ



ΜΟΥΜΑΣ

ΚΕΝΤΗΜΑ - ΤΥΠΩΜΑ





ΜΟΥΜΑΣ

ΚΕΝΤΗΜΑ - ΤΥΠΩΜΑ



ΜΟΥΜΑΣ

ΚΕΝΤΗΜΑ - ΤΥΠΩΜΑ



ΜΟΥΜΑΣ

ΚΕΝΤΗΜΑ - ΤΥΠΩΜΑ





ΜΟΥΜΑΣ

ΚΕΝΤΗΜΑ - ΤΥΠΩΜΑ



ΜΟΥΜΑΣ

ΚΕΝΤΗΜΑ - ΤΥΠΩΜΑ



ΜΟΥΜΑΣ

ΚΕΝΤΗΜΑ - ΤΥΠΩΜΑ





ΜΟΥΜΑΣ

ΚΕΝΤΗΜΑ - ΤΥΠΩΜΑ



ΜΟΥΜΑΣ

ΚΕΝΤΗΜΑ - ΤΥΠΩΜΑ



ΜΟΥΜΑΣ

ΚΕΝΤΗΜΑ - ΤΥΠΩΜΑ





ΜΟΥΜΑΣ

ΚΕΝΤΗΜΑ - ΤΥΠΩΜΑ



ΜΟΥΜΑΣ

ΚΕΝΤΗΜΑ - ΤΥΠΩΜΑ



ΜΟΥΜΑΣ

ΚΕΝΤΗΜΑ - ΤΥΠΩΜΑ





ΜΟΥΜΑΣ

ΚΕΝΤΗΜΑ - ΤΥΠΩΜΑ



ΜΟΥΜΑΣ

ΚΕΝΤΗΜΑ - ΤΥΠΩΜΑ



ΜΟΥΜΑΣ

ΚΕΝΤΗΜΑ - ΤΥΠΩΜΑ





ΜΟΥΜΑΣ

ΚΕΝΤΗΜΑ - ΤΥΠΩΜΑ



ΜΟΥΜΑΣ

ΚΕΝΤΗΜΑ - ΤΥΠΩΜΑ



ΜΟΥΜΑΣ

ΚΕΝΤΗΜΑ - ΤΥΠΩΜΑ





ΜΟΥΜΑΣ

ΚΕΝΤΗΜΑ - ΤΥΠΩΜΑ



ΜΟΥΜΑΣ

ΚΕΝΤΗΜΑ - ΤΥΠΩΜΑ



ΜΟΥΜΑΣ

ΚΕΝΤΗΜΑ - ΤΥΠΩΜΑ





ΜΟΥΜΑΣ

ΚΕΝΤΗΜΑ - ΤΥΠΩΜΑ



ΜΟΥΜΑΣ

ΚΕΝΤΗΜΑ - ΤΥΠΩΜΑ



ΜΟΥΜΑΣ

ΚΕΝΤΗΜΑ - ΤΥΠΩΜΑ





ΜΟΥΜΑΣ

ΚΕΝΤΗΜΑ - ΤΥΠΩΜΑ



ΜΟΥΜΑΣ

ΚΕΝΤΗΜΑ - ΤΥΠΩΜΑ



ΜΟΥΜΑΣ

ΚΕΝΤΗΜΑ - ΤΥΠΩΜΑ





ΜΟΥΜΑΣ

ΚΕΝΤΗΜΑ - ΤΥΠΩΜΑ



ΜΟΥΜΑΣ

ΚΕΝΤΗΜΑ - ΤΥΠΩΜΑ



ΜΟΥΜΑΣ

ΚΕΝΤΗΜΑ - ΤΥΠΩΜΑ





ΜΟΥΜΑΣ

ΚΕΝΤΗΜΑ - ΤΥΠΩΜΑ



ΜΟΥΜΑΣ

ΚΕΝΤΗΜΑ - ΤΥΠΩΜΑ



ΜΟΥΜΑΣ

ΚΕΝΤΗΜΑ - ΤΥΠΩΜΑ





ΜΟΥΜΑΣ

ΚΕΝΤΗΜΑ - ΤΥΠΩΜΑ



ΜΟΥΜΑΣ

ΚΕΝΤΗΜΑ - ΤΥΠΩΜΑ



ΜΟΥΜΑΣ

ΚΕΝΤΗΜΑ - ΤΥΠΩΜΑ





ΜΟΥΜΑΣ

ΚΕΝΤΗΜΑ - ΤΥΠΩΜΑ



ΜΟΥΜΑΣ

ΚΕΝΤΗΜΑ - ΤΥΠΩΜΑ



ΜΟΥΜΑΣ

ΚΕΝΤΗΜΑ - ΤΥΠΩΜΑ





ΜΟΥΜΑΣ

ΚΕΝΤΗΜΑ - ΤΥΠΩΜΑ



ΜΟΥΜΑΣ

ΚΕΝΤΗΜΑ - ΤΥΠΩΜΑ



ΜΟΥΜΑΣ

ΚΕΝΤΗΜΑ - ΤΥΠΩΜΑ





ΜΟΥΜΑΣ

ΚΕΝΤΗΜΑ - ΤΥΠΩΜΑ



ΜΟΥΜΑΣ

ΚΕΝΤΗΜΑ - ΤΥΠΩΜΑ



ΜΟΥΜΑΣ

ΚΕΝΤΗΜΑ - ΤΥΠΩΜΑ





ΜΟΥΜΑΣ

ΚΕΝΤΗΜΑ - ΤΥΠΩΜΑ



ΜΟΥΜΑΣ

ΚΕΝΤΗΜΑ - ΤΥΠΩΜΑ



ΜΟΥΜΑΣ

ΚΕΝΤΗΜΑ - ΤΥΠΩΜΑ





ΜΟΥΜΑΣ

ΚΕΝΤΗΜΑ - ΤΥΠΩΜΑ



ΜΟΥΜΑΣ

ΚΕΝΤΗΜΑ - ΤΥΠΩΜΑ



ΜΟΥΜΑΣ

ΚΕΝΤΗΜΑ - ΤΥΠΩΜΑ



ΜΟΥΜΑΣ

ΚΕΝΤΗΜΑ - ΤΥΠΩΜΑ





ΜΟΥΜΑΣ

ΚΕΝΤΗΜΑ - ΤΥΠΩΜΑ



ΜΟΥΜΑΣ

ΚΕΝΤΗΜΑ - ΤΥΠΩΜΑ



ΜΟΥΜΑΣ

ΚΕΝΤΗΜΑ - ΤΥΠΩΜΑ



ΜΟΥΜΑΣ

ΚΕΝΤΗΜΑ - ΤΥΠΩΜΑ





ΜΟΥΜΑΣ

ΚΕΝΤΗΜΑ - ΤΥΠΩΜΑ



ΜΟΥΜΑΣ

ΚΕΝΤΗΜΑ - ΤΥΠΩΜΑ



ΜΟΥΜΑΣ

ΚΕΝΤΗΜΑ - ΤΥΠΩΜΑ



ΜΟΥΜΑΣ

ΚΕΝΤΗΜΑ - ΤΥΠΩΜΑ





ΜΟΥΜΑΣ

ΚΕΝΤΗΜΑ - ΤΥΠΩΜΑ



ΜΟΥΜΑΣ

ΚΕΝΤΗΜΑ - ΤΥΠΩΜΑ



ΜΟΥΜΑΣ

ΚΕΝΤΗΜΑ - ΤΥΠΩΜΑ



ΜΟΥΜΑΣ

ΚΕΝΤΗΜΑ - ΤΥΠΩΜΑ





ΜΟΥΜΑΣ

ΚΕΝΤΗΜΑ - ΤΥΠΩΜΑ



ΜΟΥΜΑΣ

ΚΕΝΤΗΜΑ - ΤΥΠΩΜΑ



ΜΟΥΜΑΣ

ΚΕΝΤΗΜΑ - ΤΥΠΩΜΑ



ΜΟΥΜΑΣ

ΚΕΝΤΗΜΑ - ΤΥΠΩΜΑ





ΜΟΥΜΑΣ

ΚΕΝΤΗΜΑ - ΤΥΠΩΜΑ



ΜΟΥΜΑΣ

ΚΕΝΤΗΜΑ - ΤΥΠΩΜΑ



ΜΟΥΜΑΣ

ΚΕΝΤΗΜΑ - ΤΥΠΩΜΑ



ΜΟΥΜΑΣ

ΚΕΝΤΗΜΑ - ΤΥΠΩΜΑ





ΜΟΥΜΑΣ

ΚΕΝΤΗΜΑ - ΤΥΠΩΜΑ



ΜΟΥΜΑΣ

ΚΕΝΤΗΜΑ - ΤΥΠΩΜΑ



ΜΟΥΜΑΣ

ΚΕΝΤΗΜΑ - ΤΥΠΩΜΑ



ΜΟΥΜΑΣ

ΚΕΝΤΗΜΑ - ΤΥΠΩΜΑ





ΜΟΥΜΑΣ

ΚΕΝΤΗΜΑ - ΤΥΠΩΜΑ



ΜΟΥΜΑΣ

ΚΕΝΤΗΜΑ - ΤΥΠΩΜΑ



ΜΟΥΜΑΣ

ΚΕΝΤΗΜΑ - ΤΥΠΩΜΑ



ΜΟΥΜΑΣ

ΚΕΝΤΗΜΑ - ΤΥΠΩΜΑ





ΜΟΥΜΑΣ

ΚΕΝΤΗΜΑ - ΤΥΠΩΜΑ



ΜΟΥΜΑΣ

ΚΕΝΤΗΜΑ - ΤΥΠΩΜΑ



ΜΟΥΜΑΣ

ΚΕΝΤΗΜΑ - ΤΥΠΩΜΑ



ΜΟΥΜΑΣ

ΚΕΝΤΗΜΑ - ΤΥΠΩΜΑ





ΜΟΥΜΑΣ

ΚΕΝΤΗΜΑ - ΤΥΠΩΜΑ



ΜΟΥΜΑΣ

ΚΕΝΤΗΜΑ - ΤΥΠΩΜΑ



ΜΟΥΜΑΣ

ΚΕΝΤΗΜΑ - ΤΥΠΩΜΑ



ΜΟΥΜΑΣ

ΚΕΝΤΗΜΑ - ΤΥΠΩΜΑ





ΜΟΥΜΑΣ

ΚΕΝΤΗΜΑ - ΤΥΠΩΜΑ



ΜΟΥΜΑΣ

ΚΕΝΤΗΜΑ - ΤΥΠΩΜΑ



ΜΟΥΜΑΣ

ΚΕΝΤΗΜΑ - ΤΥΠΩΜΑ



ΜΟΥΜΑΣ

ΚΕΝΤΗΜΑ - ΤΥΠΩΜΑ





ΜΟΥΜΑΣ

ΚΕΝΤΗΜΑ - ΤΥΠΩΜΑ



ΜΟΥΜΑΣ

ΚΕΝΤΗΜΑ - ΤΥΠΩΜΑ



ΜΟΥΜΑΣ

ΚΕΝΤΗΜΑ - ΤΥΠΩΜΑ



ΜΟΥΜΑΣ

ΚΕΝΤΗΜΑ - ΤΥΠΩΜΑ





ΜΟΥΜΑΣ

ΚΕΝΤΗΜΑ - ΤΥΠΩΜΑ



ΜΟΥΜΑΣ

ΚΕΝΤΗΜΑ - ΤΥΠΩΜΑ



ΜΟΥΜΑΣ

ΚΕΝΤΗΜΑ - ΤΥΠΩΜΑ



ΜΟΥΜΑΣ

ΚΕΝΤΗΜΑ - ΤΥΠΩΜΑ





ΜΟΥΜΑΣ

ΚΕΝΤΗΜΑ - ΤΥΠΩΜΑ



ΜΟΥΜΑΣ

ΚΕΝΤΗΜΑ - ΤΥΠΩΜΑ



ΜΟΥΜΑΣ

ΚΕΝΤΗΜΑ - ΤΥΠΩΜΑ



ΜΟΥΜΑΣ

ΚΕΝΤΗΜΑ - ΤΥΠΩΜΑ





ΜΟΥΜΑΣ

ΚΕΝΤΗΜΑ - ΤΥΠΩΜΑ



ΜΟΥΜΑΣ

ΚΕΝΤΗΜΑ - ΤΥΠΩΜΑ



ΜΟΥΜΑΣ

ΚΕΝΤΗΜΑ - ΤΥΠΩΜΑ



ΜΟΥΜΑΣ

ΚΕΝΤΗΜΑ - ΤΥΠΩΜΑ





ΜΟΥΜΑΣ

ΚΕΝΤΗΜΑ - ΤΥΠΩΜΑ



ΜΟΥΜΑΣ

ΚΕΝΤΗΜΑ - ΤΥΠΩΜΑ



ΜΟΥΜΑΣ

ΚΕΝΤΗΜΑ - ΤΥΠΩΜΑ



ΜΟΥΜΑΣ

ΚΕΝΤΗΜΑ - ΤΥΠΩΜΑ





ΜΟΥΜΑΣ

ΚΕΝΤΗΜΑ - ΤΥΠΩΜΑ



ΜΟΥΜΑΣ

ΚΕΝΤΗΜΑ - ΤΥΠΩΜΑ



ΜΟΥΜΑΣ

ΚΕΝΤΗΜΑ - ΤΥΠΩΜΑ



ΜΟΥΜΑΣ

ΚΕΝΤΗΜΑ - ΤΥΠΩΜΑ





ΜΟΥΜΑΣ

ΚΕΝΤΗΜΑ - ΤΥΠΩΜΑ



ΜΟΥΜΑΣ

ΚΕΝΤΗΜΑ - ΤΥΠΩΜΑ



ΜΟΥΜΑΣ

ΚΕΝΤΗΜΑ - ΤΥΠΩΜΑ



ΜΟΥΜΑΣ

ΚΕΝΤΗΜΑ - ΤΥΠΩΜΑ





ΜΟΥΜΑΣ

ΚΕΝΤΗΜΑ - ΤΥΠΩΜΑ



ΜΟΥΜΑΣ

ΚΕΝΤΗΜΑ - ΤΥΠΩΜΑ



ΜΟΥΜΑΣ

ΚΕΝΤΗΜΑ - ΤΥΠΩΜΑ



ΜΟΥΜΑΣ

ΚΕΝΤΗΜΑ - ΤΥΠΩΜΑ





ΜΟΥΜΑΣ

ΚΕΝΤΗΜΑ - ΤΥΠΩΜΑ



ΜΟΥΜΑΣ

ΚΕΝΤΗΜΑ - ΤΥΠΩΜΑ



ΜΟΥΜΑΣ

ΚΕΝΤΗΜΑ - ΤΥΠΩΜΑ



ΜΟΥΜΑΣ

ΚΕΝΤΗΜΑ - ΤΥΠΩΜΑ





ΜΟΥΜΑΣ

ΚΕΝΤΗΜΑ - ΤΥΠΩΜΑ



ΜΟΥΜΑΣ

ΚΕΝΤΗΜΑ - ΤΥΠΩΜΑ



ΜΟΥΜΑΣ

ΚΕΝΤΗΜΑ - ΤΥΠΩΜΑ



ΜΟΥΜΑΣ

ΚΕΝΤΗΜΑ - ΤΥΠΩΜΑ





ΜΟΥΜΑΣ

ΚΕΝΤΗΜΑ - ΤΥΠΩΜΑ



ΜΟΥΜΑΣ

ΚΕΝΤΗΜΑ - ΤΥΠΩΜΑ



ΜΟΥΜΑΣ

ΚΕΝΤΗΜΑ - ΤΥΠΩΜΑ



ΜΟΥΜΑΣ

ΚΕΝΤΗΜΑ - ΤΥΠΩΜΑ





ΜΟΥΜΑΣ

ΚΕΝΤΗΜΑ - ΤΥΠΩΜΑ



ΜΟΥΜΑΣ

ΚΕΝΤΗΜΑ - ΤΥΠΩΜΑ



ΜΟΥΜΑΣ

ΚΕΝΤΗΜΑ - ΤΥΠΩΜΑ



ΜΟΥΜΑΣ

ΚΕΝΤΗΜΑ - ΤΥΠΩΜΑ





ΜΟΥΜΑΣ

ΚΕΝΤΗΜΑ - ΤΥΠΩΜΑ



ΜΟΥΜΑΣ

ΚΕΝΤΗΜΑ - ΤΥΠΩΜΑ



ΜΟΥΜΑΣ

ΚΕΝΤΗΜΑ - ΤΥΠΩΜΑ



ΜΟΥΜΑΣ

ΚΕΝΤΗΜΑ - ΤΥΠΩΜΑ



ΜΟΥΜΑΣ

ΚΕΝΤΗΜΑ - ΤΥΠΩΜΑ





ΜΟΥΜΑΣ

ΚΕΝΤΗΜΑ - ΤΥΠΩΜΑ



ΜΟΥΜΑΣ

ΚΕΝΤΗΜΑ - ΤΥΠΩΜΑ



ΜΟΥΜΑΣ

ΚΕΝΤΗΜΑ - ΤΥΠΩΜΑ



ΜΟΥΜΑΣ

ΚΕΝΤΗΜΑ - ΤΥΠΩΜΑ



ΜΟΥΜΑΣ

ΚΕΝΤΗΜΑ - ΤΥΠΩΜΑ





ΜΟΥΜΑΣ

ΚΕΝΤΗΜΑ - ΤΥΠΩΜΑ



ΜΟΥΜΑΣ

ΚΕΝΤΗΜΑ - ΤΥΠΩΜΑ



ΜΟΥΜΑΣ

ΚΕΝΤΗΜΑ - ΤΥΠΩΜΑ



ΜΟΥΜΑΣ

ΚΕΝΤΗΜΑ - ΤΥΠΩΜΑ



ΜΟΥΜΑΣ

ΚΕΝΤΗΜΑ - ΤΥΠΩΜΑ





ΜΟΥΜΑΣ

ΚΕΝΤΗΜΑ - ΤΥΠΩΜΑ



ΜΟΥΜΑΣ

ΚΕΝΤΗΜΑ - ΤΥΠΩΜΑ



ΜΟΥΜΑΣ

ΚΕΝΤΗΜΑ - ΤΥΠΩΜΑ



ΜΟΥΜΑΣ

ΚΕΝΤΗΜΑ - ΤΥΠΩΜΑ



ΜΟΥΜΑΣ

ΚΕΝΤΗΜΑ - ΤΥΠΩΜΑ





ΜΟΥΜΑΣ

ΚΕΝΤΗΜΑ - ΤΥΠΩΜΑ



ΜΟΥΜΑΣ

ΚΕΝΤΗΜΑ - ΤΥΠΩΜΑ



ΜΟΥΜΑΣ

ΚΕΝΤΗΜΑ - ΤΥΠΩΜΑ



ΜΟΥΜΑΣ

ΚΕΝΤΗΜΑ - ΤΥΠΩΜΑ



ΜΟΥΜΑΣ

ΚΕΝΤΗΜΑ - ΤΥΠΩΜΑ





ΜΟΥΜΑΣ

ΚΕΝΤΗΜΑ - ΤΥΠΩΜΑ



ΜΟΥΜΑΣ

ΚΕΝΤΗΜΑ - ΤΥΠΩΜΑ



ΜΟΥΜΑΣ

ΚΕΝΤΗΜΑ - ΤΥΠΩΜΑ



ΜΟΥΜΑΣ

ΚΕΝΤΗΜΑ - ΤΥΠΩΜΑ



ΜΟΥΜΑΣ

ΚΕΝΤΗΜΑ - ΤΥΠΩΜΑ





ΜΟΥΜΑΣ

ΚΕΝΤΗΜΑ - ΤΥΠΩΜΑ



ΜΟΥΜΑΣ

ΚΕΝΤΗΜΑ - ΤΥΠΩΜΑ



ΜΟΥΜΑΣ

ΚΕΝΤΗΜΑ - ΤΥΠΩΜΑ



ΜΟΥΜΑΣ

ΚΕΝΤΗΜΑ - ΤΥΠΩΜΑ



ΜΟΥΜΑΣ

ΚΕΝΤΗΜΑ - ΤΥΠΩΜΑ





ΜΟΥΜΑΣ

ΚΕΝΤΗΜΑ - ΤΥΠΩΜΑ



ΜΟΥΜΑΣ

ΚΕΝΤΗΜΑ - ΤΥΠΩΜΑ



ΜΟΥΜΑΣ

ΚΕΝΤΗΜΑ - ΤΥΠΩΜΑ



ΜΟΥΜΑΣ

ΚΕΝΤΗΜΑ - ΤΥΠΩΜΑ



ΜΟΥΜΑΣ

ΚΕΝΤΗΜΑ - ΤΥΠΩΜΑ





ΜΟΥΜΑΣ

ΚΕΝΤΗΜΑ - ΤΥΠΩΜΑ



ΜΟΥΜΑΣ

ΚΕΝΤΗΜΑ - ΤΥΠΩΜΑ



ΜΟΥΜΑΣ

ΚΕΝΤΗΜΑ - ΤΥΠΩΜΑ



ΜΟΥΜΑΣ

ΚΕΝΤΗΜΑ - ΤΥΠΩΜΑ



ΜΟΥΜΑΣ

ΚΕΝΤΗΜΑ - ΤΥΠΩΜΑ





ΜΟΥΜΑΣ

ΚΕΝΤΗΜΑ - ΤΥΠΩΜΑ



ΜΟΥΜΑΣ

ΚΕΝΤΗΜΑ - ΤΥΠΩΜΑ



ΜΟΥΜΑΣ

ΚΕΝΤΗΜΑ - ΤΥΠΩΜΑ



ΜΟΥΜΑΣ

ΚΕΝΤΗΜΑ - ΤΥΠΩΜΑ



ΜΟΥΜΑΣ

ΚΕΝΤΗΜΑ - ΤΥΠΩΜΑ





ΜΟΥΜΑΣ

ΚΕΝΤΗΜΑ - ΤΥΠΩΜΑ



ΜΟΥΜΑΣ

ΚΕΝΤΗΜΑ - ΤΥΠΩΜΑ



ΜΟΥΜΑΣ

ΚΕΝΤΗΜΑ - ΤΥΠΩΜΑ



ΜΟΥΜΑΣ

ΚΕΝΤΗΜΑ - ΤΥΠΩΜΑ



ΜΟΥΜΑΣ

ΚΕΝΤΗΜΑ - ΤΥΠΩΜΑ





ΜΟΥΜΑΣ

ΚΕΝΤΗΜΑ - ΤΥΠΩΜΑ



ΜΟΥΜΑΣ

ΚΕΝΤΗΜΑ - ΤΥΠΩΜΑ



ΜΟΥΜΑΣ

ΚΕΝΤΗΜΑ - ΤΥΠΩΜΑ



ΜΟΥΜΑΣ

ΚΕΝΤΗΜΑ - ΤΥΠΩΜΑ



ΜΟΥΜΑΣ

ΚΕΝΤΗΜΑ - ΤΥΠΩΜΑ





ΜΟΥΜΑΣ

ΚΕΝΤΗΜΑ - ΤΥΠΩΜΑ



ΜΟΥΜΑΣ

ΚΕΝΤΗΜΑ - ΤΥΠΩΜΑ



ΜΟΥΜΑΣ

ΚΕΝΤΗΜΑ - ΤΥΠΩΜΑ



ΜΟΥΜΑΣ

ΚΕΝΤΗΜΑ - ΤΥΠΩΜΑ



ΜΟΥΜΑΣ

ΚΕΝΤΗΜΑ - ΤΥΠΩΜΑ





ΜΟΥΜΑΣ

ΚΕΝΤΗΜΑ - ΤΥΠΩΜΑ



ΜΟΥΜΑΣ

ΚΕΝΤΗΜΑ - ΤΥΠΩΜΑ



ΜΟΥΜΑΣ

ΚΕΝΤΗΜΑ - ΤΥΠΩΜΑ



ΜΟΥΜΑΣ

ΚΕΝΤΗΜΑ - ΤΥΠΩΜΑ



ΜΟΥΜΑΣ

ΚΕΝΤΗΜΑ - ΤΥΠΩΜΑ





ΜΟΥΜΑΣ

ΚΕΝΤΗΜΑ - ΤΥΠΩΜΑ



ΜΟΥΜΑΣ

ΚΕΝΤΗΜΑ - ΤΥΠΩΜΑ



ΜΟΥΜΑΣ

ΚΕΝΤΗΜΑ - ΤΥΠΩΜΑ



ΜΟΥΜΑΣ

ΚΕΝΤΗΜΑ - ΤΥΠΩΜΑ



ΜΟΥΜΑΣ

ΚΕΝΤΗΜΑ - ΤΥΠΩΜΑ





ΜΟΥΜΑΣ

ΚΕΝΤΗΜΑ - ΤΥΠΩΜΑ



ΜΟΥΜΑΣ

ΚΕΝΤΗΜΑ - ΤΥΠΩΜΑ



ΜΟΥΜΑΣ

ΚΕΝΤΗΜΑ - ΤΥΠΩΜΑ



ΜΟΥΜΑΣ

ΚΕΝΤΗΜΑ - ΤΥΠΩΜΑ



ΜΟΥΜΑΣ

ΚΕΝΤΗΜΑ - ΤΥΠΩΜΑ





ΜΟΥΜΑΣ

ΚΕΝΤΗΜΑ - ΤΥΠΩΜΑ



ΜΟΥΜΑΣ

ΚΕΝΤΗΜΑ - ΤΥΠΩΜΑ



ΜΟΥΜΑΣ

ΚΕΝΤΗΜΑ - ΤΥΠΩΜΑ



ΜΟΥΜΑΣ

ΚΕΝΤΗΜΑ - ΤΥΠΩΜΑ



ΜΟΥΜΑΣ

ΚΕΝΤΗΜΑ - ΤΥΠΩΜΑ





ΜΟΥΜΑΣ

ΚΕΝΤΗΜΑ - ΤΥΠΩΜΑ



ΜΟΥΜΑΣ

ΚΕΝΤΗΜΑ - ΤΥΠΩΜΑ



ΜΟΥΜΑΣ

ΚΕΝΤΗΜΑ - ΤΥΠΩΜΑ



ΜΟΥΜΑΣ

ΚΕΝΤΗΜΑ - ΤΥΠΩΜΑ



ΜΟΥΜΑΣ

ΚΕΝΤΗΜΑ - ΤΥΠΩΜΑ





ΜΟΥΜΑΣ

ΚΕΝΤΗΜΑ - ΤΥΠΩΜΑ



ΜΟΥΜΑΣ

ΚΕΝΤΗΜΑ - ΤΥΠΩΜΑ



ΜΟΥΜΑΣ

ΚΕΝΤΗΜΑ - ΤΥΠΩΜΑ



ΜΟΥΜΑΣ

ΚΕΝΤΗΜΑ - ΤΥΠΩΜΑ



ΜΟΥΜΑΣ

ΚΕΝΤΗΜΑ - ΤΥΠΩΜΑ





ΜΟΥΜΑΣ

ΚΕΝΤΗΜΑ - ΤΥΠΩΜΑ



ΜΟΥΜΑΣ

ΚΕΝΤΗΜΑ - ΤΥΠΩΜΑ



ΜΟΥΜΑΣ

ΚΕΝΤΗΜΑ - ΤΥΠΩΜΑ



ΜΟΥΜΑΣ

ΚΕΝΤΗΜΑ - ΤΥΠΩΜΑ



ΜΟΥΜΑΣ

ΚΕΝΤΗΜΑ - ΤΥΠΩΜΑ





ΜΟΥΜΑΣ

ΚΕΝΤΗΜΑ - ΤΥΠΩΜΑ



ΜΟΥΜΑΣ

ΚΕΝΤΗΜΑ - ΤΥΠΩΜΑ



ΜΟΥΜΑΣ

ΚΕΝΤΗΜΑ - ΤΥΠΩΜΑ



ΜΟΥΜΑΣ

ΚΕΝΤΗΜΑ - ΤΥΠΩΜΑ



ΜΟΥΜΑΣ

ΚΕΝΤΗΜΑ - ΤΥΠΩΜΑ





ΜΟΥΜΑΣ

ΚΕΝΤΗΜΑ - ΤΥΠΩΜΑ



ΜΟΥΜΑΣ

ΚΕΝΤΗΜΑ - ΤΥΠΩΜΑ



ΜΟΥΜΑΣ

ΚΕΝΤΗΜΑ - ΤΥΠΩΜΑ



ΜΟΥΜΑΣ

ΚΕΝΤΗΜΑ - ΤΥΠΩΜΑ



ΜΟΥΜΑΣ

ΚΕΝΤΗΜΑ - ΤΥΠΩΜΑ





ΜΟΥΜΑΣ

ΚΕΝΤΗΜΑ - ΤΥΠΩΜΑ



ΜΟΥΜΑΣ

ΚΕΝΤΗΜΑ - ΤΥΠΩΜΑ



ΜΟΥΜΑΣ

ΚΕΝΤΗΜΑ - ΤΥΠΩΜΑ



ΜΟΥΜΑΣ

ΚΕΝΤΗΜΑ - ΤΥΠΩΜΑ



ΜΟΥΜΑΣ

ΚΕΝΤΗΜΑ - ΤΥΠΩΜΑ



ΜΟΥΜΑΣ

ΚΕΝΤΗΜΑ - ΤΥΠΩΜΑ





ΜΟΥΜΑΣ

ΚΕΝΤΗΜΑ - ΤΥΠΩΜΑ



ΜΟΥΜΑΣ

ΚΕΝΤΗΜΑ - ΤΥΠΩΜΑ



ΜΟΥΜΑΣ

ΚΕΝΤΗΜΑ - ΤΥΠΩΜΑ



ΜΟΥΜΑΣ

ΚΕΝΤΗΜΑ - ΤΥΠΩΜΑ



ΜΟΥΜΑΣ

ΚΕΝΤΗΜΑ - ΤΥΠΩΜΑ



ΜΟΥΜΑΣ

ΚΕΝΤΗΜΑ - ΤΥΠΩΜΑ





ΜΟΥΜΑΣ

ΚΕΝΤΗΜΑ - ΤΥΠΩΜΑ



ΜΟΥΜΑΣ

ΚΕΝΤΗΜΑ - ΤΥΠΩΜΑ



ΜΟΥΜΑΣ

ΚΕΝΤΗΜΑ - ΤΥΠΩΜΑ



ΜΟΥΜΑΣ

ΚΕΝΤΗΜΑ - ΤΥΠΩΜΑ



ΜΟΥΜΑΣ

ΚΕΝΤΗΜΑ - ΤΥΠΩΜΑ



ΜΟΥΜΑΣ

ΚΕΝΤΗΜΑ - ΤΥΠΩΜΑ





ΜΟΥΜΑΣ

ΚΕΝΤΗΜΑ - ΤΥΠΩΜΑ



ΜΟΥΜΑΣ

ΚΕΝΤΗΜΑ - ΤΥΠΩΜΑ



ΜΟΥΜΑΣ

ΚΕΝΤΗΜΑ - ΤΥΠΩΜΑ



ΜΟΥΜΑΣ

ΚΕΝΤΗΜΑ - ΤΥΠΩΜΑ



ΜΟΥΜΑΣ

ΚΕΝΤΗΜΑ - ΤΥΠΩΜΑ



ΜΟΥΜΑΣ

ΚΕΝΤΗΜΑ - ΤΥΠΩΜΑ





ΜΟΥΜΑΣ

ΚΕΝΤΗΜΑ - ΤΥΠΩΜΑ



ΜΟΥΜΑΣ

ΚΕΝΤΗΜΑ - ΤΥΠΩΜΑ



ΜΟΥΜΑΣ

ΚΕΝΤΗΜΑ - ΤΥΠΩΜΑ



ΜΟΥΜΑΣ

ΚΕΝΤΗΜΑ - ΤΥΠΩΜΑ



ΜΟΥΜΑΣ

ΚΕΝΤΗΜΑ - ΤΥΠΩΜΑ



ΜΟΥΜΑΣ

ΚΕΝΤΗΜΑ - ΤΥΠΩΜΑ





ΜΟΥΜΑΣ

ΚΕΝΤΗΜΑ - ΤΥΠΩΜΑ



ΜΟΥΜΑΣ

ΚΕΝΤΗΜΑ - ΤΥΠΩΜΑ



ΜΟΥΜΑΣ

ΚΕΝΤΗΜΑ - ΤΥΠΩΜΑ



ΜΟΥΜΑΣ

ΚΕΝΤΗΜΑ - ΤΥΠΩΜΑ



ΜΟΥΜΑΣ

ΚΕΝΤΗΜΑ - ΤΥΠΩΜΑ



ΜΟΥΜΑΣ

ΚΕΝΤΗΜΑ - ΤΥΠΩΜΑ





ΜΟΥΜΑΣ

ΚΕΝΤΗΜΑ - ΤΥΠΩΜΑ



ΜΟΥΜΑΣ

ΚΕΝΤΗΜΑ - ΤΥΠΩΜΑ



ΜΟΥΜΑΣ

ΚΕΝΤΗΜΑ - ΤΥΠΩΜΑ



ΜΟΥΜΑΣ

ΚΕΝΤΗΜΑ - ΤΥΠΩΜΑ



ΜΟΥΜΑΣ

ΚΕΝΤΗΜΑ - ΤΥΠΩΜΑ



ΜΟΥΜΑΣ

ΚΕΝΤΗΜΑ - ΤΥΠΩΜΑ





ΜΟΥΜΑΣ

ΚΕΝΤΗΜΑ - ΤΥΠΩΜΑ



ΜΟΥΜΑΣ

ΚΕΝΤΗΜΑ - ΤΥΠΩΜΑ



ΜΟΥΜΑΣ

ΚΕΝΤΗΜΑ - ΤΥΠΩΜΑ



ΜΟΥΜΑΣ

ΚΕΝΤΗΜΑ - ΤΥΠΩΜΑ



ΜΟΥΜΑΣ

ΚΕΝΤΗΜΑ - ΤΥΠΩΜΑ



ΜΟΥΜΑΣ

ΚΕΝΤΗΜΑ - ΤΥΠΩΜΑ





ΜΟΥΜΑΣ

ΚΕΝΤΗΜΑ - ΤΥΠΩΜΑ



ΜΟΥΜΑΣ

ΚΕΝΤΗΜΑ - ΤΥΠΩΜΑ



ΜΟΥΜΑΣ

ΚΕΝΤΗΜΑ - ΤΥΠΩΜΑ



ΜΟΥΜΑΣ

ΚΕΝΤΗΜΑ - ΤΥΠΩΜΑ



ΜΟΥΜΑΣ

ΚΕΝΤΗΜΑ - ΤΥΠΩΜΑ



ΜΟΥΜΑΣ

ΚΕΝΤΗΜΑ - ΤΥΠΩΜΑ





ΜΟΥΜΑΣ

ΚΕΝΤΗΜΑ - ΤΥΠΩΜΑ



ΜΟΥΜΑΣ

ΚΕΝΤΗΜΑ - ΤΥΠΩΜΑ



ΜΟΥΜΑΣ

ΚΕΝΤΗΜΑ - ΤΥΠΩΜΑ



ΜΟΥΜΑΣ

ΚΕΝΤΗΜΑ - ΤΥΠΩΜΑ



ΜΟΥΜΑΣ

ΚΕΝΤΗΜΑ - ΤΥΠΩΜΑ



ΜΟΥΜΑΣ

ΚΕΝΤΗΜΑ - ΤΥΠΩΜΑ





ΜΟΥΜΑΣ

ΚΕΝΤΗΜΑ - ΤΥΠΩΜΑ



ΜΟΥΜΑΣ

ΚΕΝΤΗΜΑ - ΤΥΠΩΜΑ



ΜΟΥΜΑΣ

ΚΕΝΤΗΜΑ - ΤΥΠΩΜΑ



ΜΟΥΜΑΣ

ΚΕΝΤΗΜΑ - ΤΥΠΩΜΑ



ΜΟΥΜΑΣ

ΚΕΝΤΗΜΑ - ΤΥΠΩΜΑ



ΜΟΥΜΑΣ

ΚΕΝΤΗΜΑ - ΤΥΠΩΜΑ





ΜΟΥΜΑΣ

ΚΕΝΤΗΜΑ - ΤΥΠΩΜΑ



ΜΟΥΜΑΣ

ΚΕΝΤΗΜΑ - ΤΥΠΩΜΑ



ΜΟΥΜΑΣ

ΚΕΝΤΗΜΑ - ΤΥΠΩΜΑ



ΜΟΥΜΑΣ

ΚΕΝΤΗΜΑ - ΤΥΠΩΜΑ



ΜΟΥΜΑΣ

ΚΕΝΤΗΜΑ - ΤΥΠΩΜΑ



ΜΟΥΜΑΣ

ΚΕΝΤΗΜΑ - ΤΥΠΩΜΑ





ΜΟΥΜΑΣ

ΚΕΝΤΗΜΑ - ΤΥΠΩΜΑ



ΜΟΥΜΑΣ

ΚΕΝΤΗΜΑ - ΤΥΠΩΜΑ



ΜΟΥΜΑΣ

ΚΕΝΤΗΜΑ - ΤΥΠΩΜΑ



ΜΟΥΜΑΣ

ΚΕΝΤΗΜΑ - ΤΥΠΩΜΑ



ΜΟΥΜΑΣ

ΚΕΝΤΗΜΑ - ΤΥΠΩΜΑ



ΜΟΥΜΑΣ

ΚΕΝΤΗΜΑ - ΤΥΠΩΜΑ





ΜΟΥΜΑΣ

ΚΕΝΤΗΜΑ - ΤΥΠΩΜΑ



ΜΟΥΜΑΣ

ΚΕΝΤΗΜΑ - ΤΥΠΩΜΑ



ΜΟΥΜΑΣ

ΚΕΝΤΗΜΑ - ΤΥΠΩΜΑ



ΜΟΥΜΑΣ

ΚΕΝΤΗΜΑ - ΤΥΠΩΜΑ



ΜΟΥΜΑΣ

ΚΕΝΤΗΜΑ - ΤΥΠΩΜΑ



ΜΟΥΜΑΣ

ΚΕΝΤΗΜΑ - ΤΥΠΩΜΑ





ΜΟΥΜΑΣ

ΚΕΝΤΗΜΑ - ΤΥΠΩΜΑ



ΜΟΥΜΑΣ

ΚΕΝΤΗΜΑ - ΤΥΠΩΜΑ



ΜΟΥΜΑΣ

ΚΕΝΤΗΜΑ - ΤΥΠΩΜΑ



ΜΟΥΜΑΣ

ΚΕΝΤΗΜΑ - ΤΥΠΩΜΑ



ΜΟΥΜΑΣ

ΚΕΝΤΗΜΑ - ΤΥΠΩΜΑ



ΜΟΥΜΑΣ

ΚΕΝΤΗΜΑ - ΤΥΠΩΜΑ





ΜΟΥΜΑΣ

ΚΕΝΤΗΜΑ - ΤΥΠΩΜΑ



ΜΟΥΜΑΣ

ΚΕΝΤΗΜΑ - ΤΥΠΩΜΑ



ΜΟΥΜΑΣ

ΚΕΝΤΗΜΑ - ΤΥΠΩΜΑ



ΜΟΥΜΑΣ

ΚΕΝΤΗΜΑ - ΤΥΠΩΜΑ



ΜΟΥΜΑΣ

ΚΕΝΤΗΜΑ - ΤΥΠΩΜΑ



ΜΟΥΜΑΣ

ΚΕΝΤΗΜΑ - ΤΥΠΩΜΑ





ΜΟΥΜΑΣ

ΚΕΝΤΗΜΑ - ΤΥΠΩΜΑ



ΜΟΥΜΑΣ

ΚΕΝΤΗΜΑ - ΤΥΠΩΜΑ



ΜΟΥΜΑΣ

ΚΕΝΤΗΜΑ - ΤΥΠΩΜΑ



ΜΟΥΜΑΣ

ΚΕΝΤΗΜΑ - ΤΥΠΩΜΑ



ΜΟΥΜΑΣ

ΚΕΝΤΗΜΑ - ΤΥΠΩΜΑ



ΜΟΥΜΑΣ

ΚΕΝΤΗΜΑ - ΤΥΠΩΜΑ





ΜΟΥΜΑΣ

ΚΕΝΤΗΜΑ - ΤΥΠΩΜΑ



ΜΟΥΜΑΣ

ΚΕΝΤΗΜΑ - ΤΥΠΩΜΑ



ΜΟΥΜΑΣ

ΚΕΝΤΗΜΑ - ΤΥΠΩΜΑ



ΜΟΥΜΑΣ

ΚΕΝΤΗΜΑ - ΤΥΠΩΜΑ



ΜΟΥΜΑΣ

ΚΕΝΤΗΜΑ - ΤΥΠΩΜΑ



ΜΟΥΜΑΣ

ΚΕΝΤΗΜΑ - ΤΥΠΩΜΑ





ΜΟΥΜΑΣ

ΚΕΝΤΗΜΑ - ΤΥΠΩΜΑ



ΜΟΥΜΑΣ

ΚΕΝΤΗΜΑ - ΤΥΠΩΜΑ



ΜΟΥΜΑΣ

ΚΕΝΤΗΜΑ - ΤΥΠΩΜΑ



ΜΟΥΜΑΣ

ΚΕΝΤΗΜΑ - ΤΥΠΩΜΑ



ΜΟΥΜΑΣ

ΚΕΝΤΗΜΑ - ΤΥΠΩΜΑ



ΜΟΥΜΑΣ

ΚΕΝΤΗΜΑ - ΤΥΠΩΜΑ





ΜΟΥΜΑΣ

ΚΕΝΤΗΜΑ - ΤΥΠΩΜΑ



ΜΟΥΜΑΣ

ΚΕΝΤΗΜΑ - ΤΥΠΩΜΑ



ΜΟΥΜΑΣ

ΚΕΝΤΗΜΑ - ΤΥΠΩΜΑ



ΜΟΥΜΑΣ

ΚΕΝΤΗΜΑ - ΤΥΠΩΜΑ



ΜΟΥΜΑΣ

ΚΕΝΤΗΜΑ - ΤΥΠΩΜΑ



ΜΟΥΜΑΣ

ΚΕΝΤΗΜΑ - ΤΥΠΩΜΑ





ΜΟΥΜΑΣ

ΚΕΝΤΗΜΑ - ΤΥΠΩΜΑ



ΜΟΥΜΑΣ

ΚΕΝΤΗΜΑ - ΤΥΠΩΜΑ



ΜΟΥΜΑΣ

ΚΕΝΤΗΜΑ - ΤΥΠΩΜΑ



ΜΟΥΜΑΣ

ΚΕΝΤΗΜΑ - ΤΥΠΩΜΑ



ΜΟΥΜΑΣ

ΚΕΝΤΗΜΑ - ΤΥΠΩΜΑ



ΜΟΥΜΑΣ

ΚΕΝΤΗΜΑ - ΤΥΠΩΜΑ





ΜΟΥΜΑΣ

ΚΕΝΤΗΜΑ - ΤΥΠΩΜΑ



ΜΟΥΜΑΣ

ΚΕΝΤΗΜΑ - ΤΥΠΩΜΑ



ΜΟΥΜΑΣ

ΚΕΝΤΗΜΑ - ΤΥΠΩΜΑ



ΜΟΥΜΑΣ

ΚΕΝΤΗΜΑ - ΤΥΠΩΜΑ



ΜΟΥΜΑΣ

ΚΕΝΤΗΜΑ - ΤΥΠΩΜΑ



ΜΟΥΜΑΣ

ΚΕΝΤΗΜΑ - ΤΥΠΩΜΑ





ΜΟΥΜΑΣ

ΚΕΝΤΗΜΑ - ΤΥΠΩΜΑ



ΜΟΥΜΑΣ

ΚΕΝΤΗΜΑ - ΤΥΠΩΜΑ



ΜΟΥΜΑΣ

ΚΕΝΤΗΜΑ - ΤΥΠΩΜΑ



ΜΟΥΜΑΣ

ΚΕΝΤΗΜΑ - ΤΥΠΩΜΑ



ΜΟΥΜΑΣ

ΚΕΝΤΗΜΑ - ΤΥΠΩΜΑ



ΜΟΥΜΑΣ

ΚΕΝΤΗΜΑ - ΤΥΠΩΜΑ



ΜΟΥΜΑΣ

ΚΕΝΤΗΜΑ - ΤΥΠΩΜΑ





ΜΟΥΜΑΣ

ΚΕΝΤΗΜΑ - ΤΥΠΩΜΑ



ΜΟΥΜΑΣ

ΚΕΝΤΗΜΑ - ΤΥΠΩΜΑ



ΜΟΥΜΑΣ

ΚΕΝΤΗΜΑ - ΤΥΠΩΜΑ



ΜΟΥΜΑΣ

ΚΕΝΤΗΜΑ - ΤΥΠΩΜΑ



ΜΟΥΜΑΣ

ΚΕΝΤΗΜΑ - ΤΥΠΩΜΑ



ΜΟΥΜΑΣ

ΚΕΝΤΗΜΑ - ΤΥΠΩΜΑ



ΜΟΥΜΑΣ

ΚΕΝΤΗΜΑ - ΤΥΠΩΜΑ





ΜΟΥΜΑΣ

ΚΕΝΤΗΜΑ - ΤΥΠΩΜΑ



ΜΟΥΜΑΣ

ΚΕΝΤΗΜΑ - ΤΥΠΩΜΑ



ΜΟΥΜΑΣ

ΚΕΝΤΗΜΑ - ΤΥΠΩΜΑ



ΜΟΥΜΑΣ

ΚΕΝΤΗΜΑ - ΤΥΠΩΜΑ



ΜΟΥΜΑΣ

ΚΕΝΤΗΜΑ - ΤΥΠΩΜΑ



ΜΟΥΜΑΣ

ΚΕΝΤΗΜΑ - ΤΥΠΩΜΑ



ΜΟΥΜΑΣ

ΚΕΝΤΗΜΑ - ΤΥΠΩΜΑ





ΜΟΥΜΑΣ

ΚΕΝΤΗΜΑ - ΤΥΠΩΜΑ



ΜΟΥΜΑΣ

ΚΕΝΤΗΜΑ - ΤΥΠΩΜΑ



ΜΟΥΜΑΣ

ΚΕΝΤΗΜΑ - ΤΥΠΩΜΑ



ΜΟΥΜΑΣ

ΚΕΝΤΗΜΑ - ΤΥΠΩΜΑ



ΜΟΥΜΑΣ

ΚΕΝΤΗΜΑ - ΤΥΠΩΜΑ



ΜΟΥΜΑΣ

ΚΕΝΤΗΜΑ - ΤΥΠΩΜΑ



ΜΟΥΜΑΣ

ΚΕΝΤΗΜΑ - ΤΥΠΩΜΑ





ΜΟΥΜΑΣ

ΚΕΝΤΗΜΑ - ΤΥΠΩΜΑ



ΜΟΥΜΑΣ

ΚΕΝΤΗΜΑ - ΤΥΠΩΜΑ



ΜΟΥΜΑΣ

ΚΕΝΤΗΜΑ - ΤΥΠΩΜΑ

